

Anti-CPT1B antibody (533-772) (STJ28879)

GENERAL INFORMATION

Product Type	Primary antibodies
Applications	WB/IHC-P/IF/ICC/ELISA
Host / Source	Rabbit
Reactivity	Human/Mouse/Rat

PRODUCT PROPERTIES

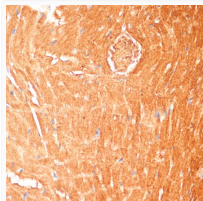
Clonality	Polyclonal
Concentration	Lot specific
Conjugation	Unconjugated
Purification	Affinity purification
Dilution Range	WB:1:100-1:500 IHC-P:1:50-1:200 IF/CC:1:50-1:200 ELISA:Recommended starting concentration is 1 μ g/mL. Please optimize the concentration based on your specific assay requirements.
Formulation	PBS with 0.09% Sodium Azide, 50% Glycerol, pH7.3.
Isotype	IgG
Molecular Weight	Protein Mw: 88kDa Observed Mw: 88kDa
Storage Instruction	Store at -20°C for up to 1 year from the date of receipt, and avoid repeat freeze-thaw cycles.

TARGET INFORMATION

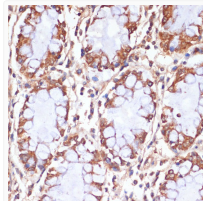
Gene ID	1375
Gene Symbol	CPT1B
UniProt ID	CPT1B_HUMAN
Immunogen Region	533-772
Immunogen Sequence	SYQVAKALADDVELYCFQFL PFGKGLIKKCRTPDAFVQI ALQLAHFRDRGKFCCLTYEAS MTRMFREGRTETVRSCTSES TAFVQAMMEGSHTKADLRDL FQKAAKKHQNMYRLAMTGAG IDRHFLFCLYLVSKYLVGVSSP FLAEVLSEPWRLSTSQIPQS QIRMFDPHQHPNHLGAGGGF GPVADDGYGVSYMIAGENTI FFHISSKFSSTNAQRFNGN HIRKALLDIALDFQVPKAY
Specificity	Recombinant fusion protein containing a sequence corresponding to amino acids 533-772 of human CPT1B (NP_004368.1).

ADDITIONAL INFORMATION

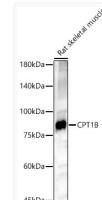
Note STRICTLY FOR FURTHER SCIENTIFIC RESEARCH USE ONLY (RUO). MUST NOT TO BE USED IN DIAGNOSTIC OR THERAPEUTIC APPLICATIONS.



Immunohistochemistry analysis of CPT1B in paraffin-embedded mouse heart using CPT1B Rabbit polyclonal antibody (STJ28879) at dilution of 1:100 (40x lens). Perform microwave antigen retrieval with 10 mM PBS buffer pH 7.2 before commencing with immunohistochemistry staining protocol.



Immunohistochemistry analysis of CPT1B in paraffin-embedded human colon using CPT1B Rabbit polyclonal antibody (STJ28879) at dilution of 1:100 (40x lens). Perform microwave antigen retrieval with 10 mM PBS buffer pH 7.2 before commencing with immunohistochemistry staining protocol.



Western blot analysis of lysates from Rat skeletal muscle, using CPT1B Rabbit polyclonal antibody (STJ28879) at 1:500 dilution. Secondary antibody: HRP Goat Anti-Rabbit IgG (H+L) (STJS000856) at 1:10000 dilution. Lysates/proteins: 25ug per lane. Blocking buffer: 3% nonfat dry milk in TBST. Detection: ECL Basic Kit. Exposure time: 180s.