

Anti-BCL9 antibody (STJ28878)

GENERAL INFORMATION

Product Type	Primary antibodies
Applications	WB/IHC-P/ELISA
Host / Source	Rabbit
Reactivity	Human/Mouse/Rat

PRODUCT PROPERTIES

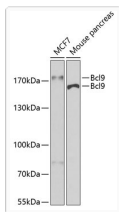
Clonality	Polyclonal
Concentration	Lot specific
Conjugation	Unconjugated
Purification	Affinity purification
Dilution Range	WB:1:500-1:2000 IHC-P:1:50-1:200 ELISA:Recommended starting concentration is 1 μ g/mL. Please optimize the concentration based on your specific assay requirements.
Formulation	PBS with 0.05% Proclin300, 50% Glycerol, pH7.3.
Isotype	IgG
Molecular Weight	Protein Mw: 149kDa Observed Mw: 160kDa/170kDa
Storage Instruction	Store at -20°C for up to 1 year from the date of receipt, and avoid repeat freeze-thaw cycles.

TARGET INFORMATION

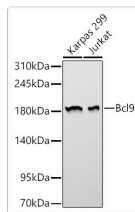
Gene ID	77578
Gene Symbol	Bcl9
UniProt ID	BCL9_MOUSE
Specificity	Recombinant protein of mouse Bcl9

ADDITIONAL INFORMATION

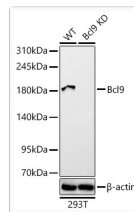
Note	STRICTLY FOR FURTHER SCIENTIFIC RESEARCH USE ONLY (RUO). MUST NOT TO BE USED IN DIAGNOSTIC OR THERAPEUTIC APPLICATIONS.
------	---



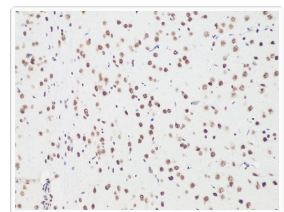
Western blot analysis of various lysates using Bcl9 Rabbit pAb (STJ28878) at 1:400 dilution.
 Secondary antibody: HRP-conjugated Goat anti-Rabbit IgG (H+L) (STJS000856) at 1:10000 dilution.
 Lysates/proteins: 25 Mu g per lane.
 Blocking buffer: 3% nonfat dry milk in TBST.
 Detection: ECL Basic Kit
 Exposure time: 30s.



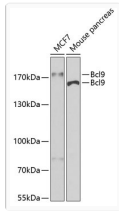
Western blot analysis of various lysates using [KD Validated] Bcl9 Rabbit pAb (STJ28878) at 1:1000 dilution.
 Secondary antibody: HRP-conjugated Goat anti-Rabbit IgG (H+L) (STJS000856) at 1:10000 dilution.
 Lysates/ proteins: 25 Mu g per lane.
 Blocking buffer: 3 % nonfat dry milk in TBST.
 Detection: ECL Basic Kit
 Exposure time: 60s.



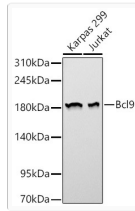
Western blot analysis of lysates from wild type (WT) and Bcl9 knockdown (KD) 293T cells using [KD Validated] Bcl9 Rabbit pAb (STJ28878) at 1:1000 dilution.
 Secondary antibody: HRP-conjugated Goat anti-Rabbit IgG (H+L) (STJS000856) at 1:10000 dilution.
 Lysates/proteins: 25 Mu g per lane.
 Blocking buffer: 3% nonfat dry milk in TBST.
 Detection: ECL Basic Kit
 Exposure time: 60s.



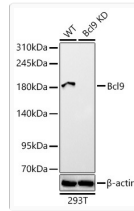
Immunohistochemistry analysis of paraffin-embedded Rat brain using Bcl9 Rabbit pAb (STJ28878) at dilution of 1:100 (20x lens).
 Microwave antigen retrieval performed with 0.01M PBS Buffer (pH 7.2) prior to immunohistochemistry staining.



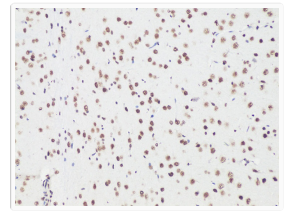
Western blot analysis of various lysates using Bcl9 Rabbit pAb (STJ28878) at 1:400 dilution.
 Secondary antibody: HRP-conjugated Goat anti-Rabbit IgG (H+L) (STJS000856) at 1:10000 dilution.
 Lysates/proteins: 25 Mu g per lane.
 Blocking buffer: 3% nonfat dry milk in TBST.
 Detection: ECL Basic Kit
 Exposure time: 30s.



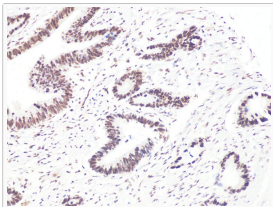
Western blot analysis of various lysates using [KD Validated] Bcl9 Rabbit pAb (STJ28878) at 1:1000 dilution.
 Secondary antibody: HRP-conjugated Goat anti-Rabbit IgG (H+L) (STJS000856) at 1:10000 dilution.
 Lysates/ proteins: 25 Mu g per lane.
 Blocking buffer: 3 % nonfat dry milk in TBST.
 Detection: ECL Basic Kit
 Exposure time: 60s.



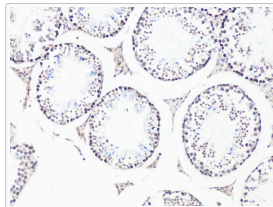
Western blot analysis of lysates from wild type (WT) and Bcl9 knockdown (KD) 293T cells using [KD Validated] Bcl9 Rabbit pAb (STJ28878) at 1:1000 dilution.
 Secondary antibody: HRP-conjugated Goat anti-Rabbit IgG (H+L) (STJS000856) at 1:10000 dilution.
 Lysates/proteins: 25 Mu g per lane.
 Blocking buffer: 3% nonfat dry milk in TBST.
 Detection: ECL Basic Kit
 Exposure time: 60s.



Immunohistochemistry analysis of paraffin-embedded Rat brain using Bcl9 Rabbit pAb (STJ28878) at dilution of 1:100 (20x lens).
 Microwave antigen retrieval performed with 0.01M PBS Buffer (pH 7.2) prior to immunohistochemistry staining.



Immunohistochemistry analysis of paraffin-embedded Human colon carcinoma using Bcl9 Rabbit pAb (STJ28878) at dilution of 1:100 (20x lens).
 Microwave antigen retrieval performed with 0.01M PBS Buffer (pH 7.2) prior to immunohistochemistry staining.



Immunohistochemistry analysis of paraffin-embedded Mouse testis using Bcl9 Rabbit pAb (STJ28878) at dilution of 1:100 (20x lens).
 Microwave antigen retrieval performed with 0.01M PBS Buffer (pH 7.2) prior to immunohistochemistry staining.