

Anti-XPO5 antibody (925-1204) (STJ28873)

GENERAL INFORMATION

Product Type	Primary antibodies
Applications	WB/IF/ICC/IP/ELISA
Host / Source	Rabbit
Reactivity	Human/Mouse/Rat

PRODUCT PROPERTIES

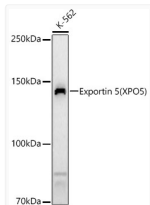
Clonality	Polyclonal
Concentration	Lot specific
Conjugation	Unconjugated
Purification	Affinity purification
Dilution Range	WB:1:2000-1:10000 IF/CC:1:100-1:500 IP:0.5 Mu g-4 Mu g antibody for 200 Mu g-400 Mu g extracts of whole cells ELISA:Recommended starting concentration is 1 Mu g/mL. Please optimize the concentration based on your specific assay requireme
Formulation	PBS with 0.05% Proclin300, 50% Glycerol, pH7.3.
Isotype	IgG
Molecular Weight	Protein Mw: 136kDa Observed Mw: 136kDa
Storage Instruction	Store at -20°C for up to 1 year from the date of receipt, and avoid repeat freeze-thaw cycles.

TARGET INFORMATION

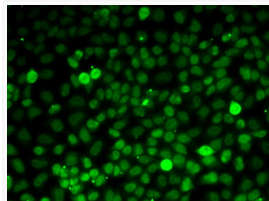
Gene ID	57510
Gene Symbol	XPO5
UniProt ID	XPO5_HUMAN
Immunogen Region	925-1204
Immunogen Sequence	MRLSQKWQVINQRSLLCGED EAADENPESQEMLEEQVLRM LTREVMDLITVCCVSKKGAD HSSAPPADGGDEEMMATEVT PSAMAELDLGKCLMKHEDV CTALLITAFNSLAWKDTLSC QRTTSQLCWPLLKQVLSGTL LADAVTWLFTSVLKGQLQMHG QHDGCMASLVHLAFQIYEAL RPRYLEIRAVMQEIPEIQKD SLDQFDCKLLNPSLQKVADK RRRKDQFKRLIAGCIGKPLG
Specificity	Recombinant fusion protein containing a sequence corresponding to amino acids 925-1204 of human Exportin 5 (Exportin 5 (XPO5)) (NP_065801.1).

ADDITIONAL INFORMATION

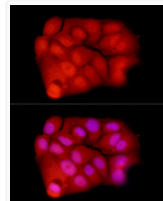
Note **STRICTLY FOR FURTHER SCIENTIFIC RESEARCH USE ONLY (RUO). MUST NOT TO BE USED IN DIAGNOSTIC OR THERAPEUTIC APPLICATIONS.**



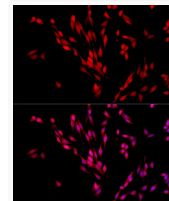
Western blot analysis of various lysates, using Exportin 5 (XPO5) rabbit polyclonal antibody (STJ28873) at 1:10000 dilution. Secondary antibody: HRP Goat Anti-rabbit IgG (H+L) (STJS000856) at 1:10000 dilution. Lysates/proteins: 25 Mu g per lane. Blocking buffer: 3% non-fat dry milk in TBST. Detection: ECL Basic Kit. Exposure time: 90s.



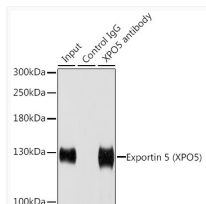
Immunofluorescence analysis of MCF7 cells using Exportin 5 (Exportin 5 (XPO5)) antibody (STJ28873).



Immunofluorescence analysis of MCF7 cells using Exportin 5 (XPO5) rabbit polyclonal antibody (STJ28873) at dilution of 1:500 (40x lens). Blue: DAPI for nuclear staining.



Immunofluorescence analysis of PC-12 cells using Exportin 5 (XPO5) rabbit polyclonal antibody (STJ28873) at dilution of 1:500 (40x lens). Blue: DAPI for nuclear staining.



Immunoprecipitation analysis of 200 Mu g extracts of HeLa cells using 1 Mu g Exportin 5 (Exportin 5 (XPO5)) antibody (STJ28873). Western blot was performed from the immunoprecipitate using Exportin 5 (Exportin 5 (XPO5)) antibody (STJ28873) at a dilution of 1:1000.