

Anti-UQCRFS1 antibody (141-274) (STJ28867)

GENERAL INFORMATION

Product Type	Primary antibodies
Applications	WB/IHC-P/ELISA
Host / Source	Rabbit
Reactivity	Human/Mouse/Rat

PRODUCT PROPERTIES

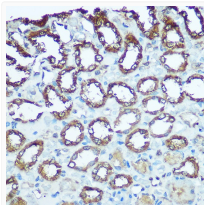
Clonality	Polyclonal
Concentration	Lot specific
Conjugation	Unconjugated
Purification	Affinity purification
Dilution Range	WB:1:500-1:1000 IHC-P:1:50-1:200 ELISA:Recommended starting concentration is 1 µg/mL. Please optimize the concentration based on your specific assay requirements.
Formulation	PBS with 0.05% Proclin300, 50% Glycerol, pH 7.3.
Isotype	IgG
Molecular Weight	Protein Mw: 30kDa Observed Mw: 23kDa
Storage Instruction	Store at -20°C for up to 1 year from the date of receipt, and avoid repeat freeze-thaw cycles.

TARGET INFORMATION

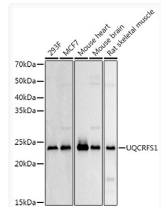
Gene ID	7386
Gene Symbol	UQCRFS1
UniProt ID	UCRL_HUMAN
Immunogen Region	141-274
Immunogen Sequence	SASADVLALAKIEIKLSDIP EGKNMAFKWRGKPLFVRHRT QKEIEQEAAVELSQRDPQH DLDRVKKPEWVILIGVCTHL GCVPIANAGDFGGYYCPCHG SHYDASGRIRLGPAPLNLEV PTYEFTSDDMVIIVG
Specificity	Recombinant fusion protein containing a sequence corresponding to amino acids 141-274 of human UQCRFS1 (NP_005994.2).

ADDITIONAL INFORMATION

Note **STRICTLY FOR FURTHER SCIENTIFIC RESEARCH USE ONLY (RUO). MUST NOT TO BE USED IN DIAGNOSTIC OR THERAPEUTIC APPLICATIONS.**



Immunohistochemistry analysis of paraffin-embedded rat kidney using UQCRFS1 Rabbit polyclonal antibody (STJ28867) at dilution of 1:100 (40x lens). Perform microwave antigen retrieval with 10 mM Tris/EDTA buffer pH 9.0 before commencing with immunohistochemistry staining protocol.



Western blot analysis of extracts of various cell lines, using UQCRFS1 Rabbit polyclonal antibody (STJ28867) at 1:500 dilution. Secondary antibody: HRP Goat Anti-Rabbit IgG (H+L) (STJS000856) at 1:10000 dilution. Lysates/proteins: 25 µg per lane. Blocking buffer: 3% nonfat dry milk in TBST. Detection: ECL Basic Kit. Exposure time: 3s.