

Anti-TXN2 antibody (1-166) (STJ28865)

GENERAL INFORMATION

Product Type	Primary antibodies
Applications	WB/IF/ICC/ELISA
Host / Source	Rabbit
Reactivity	Human/Mouse

PRODUCT PROPERTIES

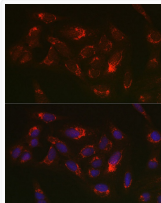
Clonality	Polyclonal
Concentration	Lot specific
Conjugation	Unconjugated
Purification	Affinity purification
Dilution Range	WB:1:500-1:2000 IF/CC:1:50-1:200 ELISA:Recommended starting concentration is 1 Mu g/mL. Please optimize the concentration based on your specific assay requirements.
Formulation	PBS with 0.02% Sodium Azide, 50% Glycerol, pH 7.3.
Isotype	IgG
Molecular Weight	Protein Mw: 18kDa Observed Mw: 13kDa
Storage Instruction	Store at -20°C for up to 1 year from the date of receipt, and avoid repeat freeze-thaw cycles.

TARGET INFORMATION

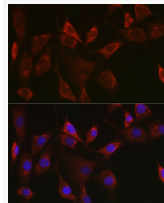
Gene ID	25828
Gene Symbol	TXN2
UniProt ID	THIOM_HUMAN
Immunogen Region	1-166
Immunogen Sequence	MAQRLLLRFLASVISRKPS QGQWPPLTSRALQTPQCSPG GLTVTPNPARTIYTRISLT TFNIQDGPDFQDRVNSETP VVVDFFHAQWCGPCKILGPRL EKMVAKQHKGKVVMAKVDIDD HTDLAIEYEVSAVPTVLAMK NGDVVDKFKVIGKDEDDQLEAF LKKLIG
Specificity	Recombinant fusion protein containing a sequence corresponding to amino acids 1-166 of human Thioredoxin 2 (Trx2/Thioredoxin 2 (Trx2/TXN2)) (NP_036605.2).

ADDITIONAL INFORMATION

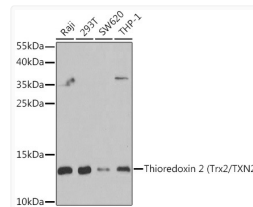
Note **STRICTLY FOR FURTHER SCIENTIFIC RESEARCH USE ONLY (RUO). MUST NOT TO BE USED IN DIAGNOSTIC OR THERAPEUTIC APPLICATIONS.**



Immunofluorescence analysis of U2OS cells using Thioredoxin 2 (Trx2/TXN2) Rabbit polyclonal antibody (STJ28865) at dilution of 1:100 (40x lens). Blue: DAPI for nuclear staining.



Immunofluorescence analysis of NIH/3T3 cells using Thioredoxin 2 (Trx2/TXN2) Rabbit polyclonal antibody (STJ28865) at dilution of 1:100 (40x lens). Blue: DAPI for nuclear staining.



Western blot analysis of extracts of various cell lines, using Thioredoxin 2 (Trx2/Thioredoxin 2 (Trx2/TXN2)) antibody (STJ28865) at 1:1000 dilution. Secondary antibody: HRP Goat Anti-Rabbit IgG (H+L) (STJS000856) at 1:10000 dilution. Lysates/proteins: 25 Mu g per lane. Blocking buffer: 3% nonfat dry milk in TBST. Detection: ECL Basic Kit. Exposure time: 30s.