

Anti-SMPD1 antibody (70-340) (STJ28826)

GENERAL INFORMATION

Product Type	Primary antibodies
Applications	WB/IF/ICC/ELISA
Host / Source	Rabbit
Reactivity	Human/Mouse/Rat

PRODUCT PROPERTIES

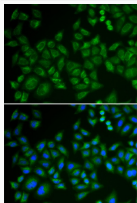
Clonality	Polyclonal
Concentration	Lot specific
Conjugation	Unconjugated
Purification	Affinity purification
Dilution Range	WB:1:100-1:500 IF/CC:1:10-1:100 ELISA:Recommended starting concentration is 1 Mu g/mL. Please optimize the concentration based on your specific assay requirements.
Formulation	PBS with 0.01% Thimerosal, 50% Glycerol, pH 7.3.
Isotype	IgG
Molecular Weight	Protein Mw: 70kDa Observed Mw: 55kDa/70kDa/60kDa, 70-75kDa
Storage Instruction	Store at -20°C for up to 1 year from the date of receipt, and avoid repeat freeze-thaw cycles.

TARGET INFORMATION

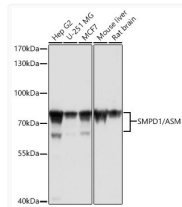
Gene ID	6609
Gene Symbol	SMPD1
UniProt ID	ASM_HUMAN
Immunogen Region	70-340
Immunogen Sequence	PARLHRIVPRLRDVFGWGNL TCPICKGLFTAINLGLKKEP NVARVGSVAIKLCNLLKIAP PAVCGSIVHLFEDDMVEVWR RSVLSPSEACGLLLGSTCGH WDFSSWNISLPTVPKPPPK PPSPPAPGAPVSRILFLTDL HWDHDYLEGTDPCADPLCC RRGSLPPASRPAGAGYWGEY SKCDLPLRTLLESLLSGLGPA GPFDMVYWTGDIPAHDVWHQ TRQDQLRALTTVTALVRKF
Specificity	Recombinant fusion protein containing a sequence corresponding to amino acids 70-340 of human SMPD1/ASM (NP_000534.3).

ADDITIONAL INFORMATION

Note STRICTLY FOR FURTHER SCIENTIFIC RESEARCH USE ONLY (RUO). MUST NOT TO BE USED IN DIAGNOSTIC OR THERAPEUTIC APPLICATIONS.



Immunofluorescence analysis of HeLa cells using SMPD1/ ASM Rabbit polyclonal antibody (STJ28826). Secondary antibody: Cy3 Goat Anti-Rabbit IgG (H+L) at 1:500 dilution. Blue: DAPI for nuclear staining.



Western blot analysis of various lysates using SMPD1/ ASM Rabbit polyclonal antibody (STJ28826) at 1:1000 dilution. Secondary antibody:HRP Goat Anti-Rabbit IgG (H+L) (STJS000856) at 1:10000 dilution. Lysates/ proteins: 25 Mu g per lane. Blocking buffer: 3 % nonfat dry milk in TBST. Detection:ECL Basic Kit. Exposure time: 5s.