

Anti-MSRB1 antibody (1-94) (STJ28820)

GENERAL INFORMATION

Product Type	Primary antibodies
Applications	WB/IHC-P/IF/ICC/ELISA
Host / Source	Rabbit
Reactivity	Human/Mouse/Rat

PRODUCT PROPERTIES

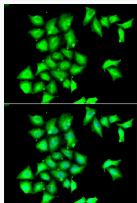
Clonality	Polyclonal
Concentration	Lot specific
Conjugation	Unconjugated
Purification	Affinity purification
Dilution Range	WB:1:500-1:2000 IHC-P:1:100-1:500 IF/ICC:1:50-1:100 ELISA:Recommended starting concentration is 1 Mu g/mL. Please optimize the concentration based on your specific assay requirements.
Formulation	PBS with 0.02% Sodium Azide, 50% Glycerol, pH 7.3.
Isotype	IgG
Molecular Weight	Protein Mw: 13kDa Observed Mw: 13kDa
Storage Instruction	Store at -20°C for up to 1 year from the date of receipt, and avoid repeat freeze-thaw cycles.

TARGET INFORMATION

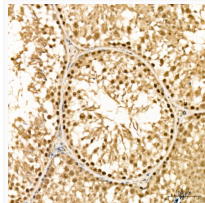
Gene ID	51734
Gene Symbol	MSRB1
UniProt ID	MSRB1_HUMAN
Immunogen Region	1-94
Immunogen Sequence	MSFCSFFGGGEVFNHFEPGV YVCAKCGYELFSSRSKYAHS SPWPAFTETIHADSVAKRPE HNRSEALKVSCGKCGNGLGH EFLNDGPKPGQSRF
Specificity	Recombinant fusion protein containing a sequence corresponding to amino acids 1-94 of human MSRB1 (NP_057416.1).

ADDITIONAL INFORMATION

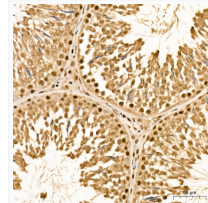
Note **STRICTLY FOR FURTHER SCIENTIFIC RESEARCH USE ONLY (RUO). MUST NOT TO BE USED IN DIAGNOSTIC OR THERAPEUTIC APPLICATIONS.**



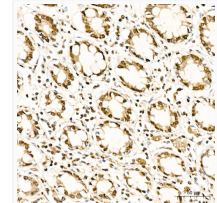
Immunofluorescence analysis of HeLa cells using MSRB1 Rabbit polyclonal antibody (STJ28820). Secondary antibody: Cy3 Goat Anti-Rabbit IgG (H+L) at 1:500 dilution. Blue: DAPI for nuclear staining.



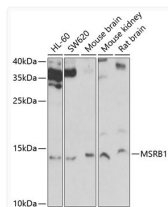
Immunohistochemistry analysis of MSRB1 in paraffin-embedded Mouse testis tissue using MSRB1 Rabbit polyclonal antibody (STJ28820) at a dilution of 1:300 (40x lens). High pressure antigen retrieval was performed with 0.01 M citrate buffer (pH 6.0) prior to immunohistochemistry staining.



Immunohistochemistry analysis of MSRB1 in paraffin-embedded Rat testis tissue using MSRB1 Rabbit polyclonal antibody (STJ28820) at a dilution of 1:300 (40x lens). High pressure antigen retrieval was performed with 0.01 M citrate buffer (pH 6.0) prior to immunohistochemistry staining.



Immunohistochemistry analysis of MSRB1 in paraffin-embedded Human colon tissue using MSRB1 Rabbit polyclonal antibody (STJ28820) at a dilution of 1:300 (40x lens). High pressure antigen retrieval was performed with 0.01 M citrate buffer (pH 6.0) prior to immunohistochemistry staining.



Western blot analysis of various lysates using MSRB1 Rabbit polyclonal antibody (STJ28820) at 1:1000 dilution. Secondary antibody: HRP Goat Anti-Rabbit IgG (H+L) (STJS000856) at 1:10000 dilution. Lysates/proteins: 25 Mu g per lane. Blocking buffer: 3% nonfat dry milk in TBST. Detection: ECL Basic Kit. Exposure time: 30s.