

Anti-SECISBP2 antibody (585-854) (STJ28819)

GENERAL INFORMATION

Product Type	Primary antibodies
Applications	WB/IHC-P/IF/ICC/ELISA
Host / Source	Rabbit
Reactivity	Human/Mouse/Rat

PRODUCT PROPERTIES

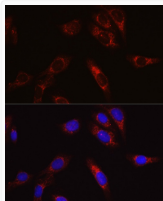
Clonality	Polyclonal
Concentration	Lot specific
Conjugation	Unconjugated
Purification	Affinity purification
Dilution Range	WB:1:100-1:500 IHC-P:1:50-1:200 IF/CC:1:50-1:200 ELISA:Recommended starting concentration is 1 μ g/mL. Please optimize the concentration based on your specific assay requirements.
Formulation	PBS with 0.02% Sodium Azide, 50% Glycerol, pH 7.3.
Isotype	IgG
Molecular Weight	Protein Mw: 95kDa Observed Mw: 110kDa
Storage Instruction	Store at -20°C for up to 1 year from the date of receipt, and avoid repeat freeze-thaw cycles.

TARGET INFORMATION

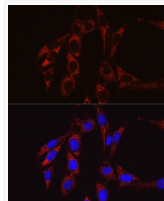
Gene ID	79048
Gene Symbol	SECISBP2
UniProt ID	SEBP2_HUMAN
Immunogen Region	585-854
Immunogen Sequence	DELISTPSVEDKSEPPGTE LQRDTEASHLAPNHTTFPKI HSRFRDYCSQMLSKEVDAC VTDLLKELVRFQDRMYQKDP VKAKTKRRLVGLREVLKHL KLKLLKCVIISPNCIEIQSK GGLDDTLHTIIDYACEQNIP FVFALNRKALGRSLNKAVPV SVVGIFSYDGAQQDFHKMVE LTVAAARQAYKTMLENVQQL VGEPRPQAPPPLPTQGGPSCP AEDGPPALKEKEEPHYIEI
Specificity	Recombinant fusion protein containing a sequence corresponding to amino acids 585-854 of human SECISBP2 (NP_076982.3).

ADDITIONAL INFORMATION

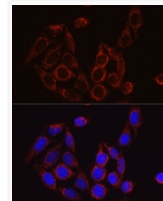
Note	STRICTLY FOR FURTHER SCIENTIFIC RESEARCH USE ONLY (RUO). MUST NOT TO BE USED IN DIAGNOSTIC OR THERAPEUTIC APPLICATIONS.
------	---



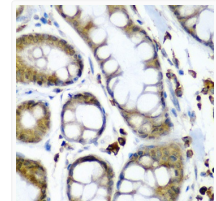
Immunofluorescence analysis of U2OS cells using SECISBP2 Rabbit polyclonal antibody (STJ28819) at dilution of 1:50 (40x lens). Blue: DAPI for nuclear staining.



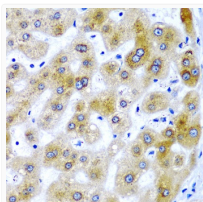
Immunofluorescence analysis of NIH/3T3 cells using SECISBP2 Rabbit polyclonal antibody (STJ28819) at dilution of 1:50 (40x lens). Blue: DAPI for nuclear staining.



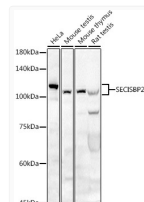
Immunofluorescence analysis of HeLa cells using SECISBP2 Rabbit polyclonal antibody (STJ28819) at dilution of 1:50 (40x lens). Blue: DAPI for nuclear staining.



Immunohistochemistry analysis of paraffin-embedded human colon carcinoma using SECISBP2 antibody (STJ28819) at dilution of 1:200 (40x lens). Perform microwave antigen retrieval with 10 mM PBS buffer pH 7.2 before commencing with immunohistochemistry staining protocol.



Immunohistochemistry analysis of paraffin-embedded human liver damage using SECISBP2 antibody (STJ28819) at dilution of 1:200 (40x lens). Perform microwave antigen retrieval with 10 mM PBS buffer pH 7.2 before commencing with immunohistochemistry staining protocol.



Western blot analysis of extracts of various cell lines, using SECISBP2 antibody (STJ28819) at 1:500 dilution. Secondary antibody: HRP Goat Anti-Rabbit IgG (H+L) (STJS000856) at 1:10000 dilution. Lysates/proteins: 25 μ g per lane. Blocking buffer: 3% nonfat dry milk in TBST. Detection: ECL Basic Kit. Exposure time: 180s.