

Anti-RPS14 antibody (1-151) (STJ28810)

GENERAL INFORMATION

Product Type	Primary antibodies
Applications	WB/IHC-P/IF/ICC/ELISA
Host / Source	Rabbit
Reactivity	Human/Mouse/Rat

PRODUCT PROPERTIES

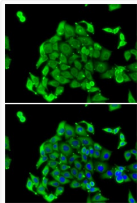
Clonality	Polyclonal
Concentration	Lot specific
Conjugation	Unconjugated
Purification	Affinity purification
Dilution Range	WB:1:500-1:2000 IHC-P:1:50-1:200 IF/ICC:1:50-1:200 ELISA:Recommended starting concentration is 1 Mu g/mL. Please optimize the concentration based on your specific assay requirements.
Formulation	PBS with 0.02% Sodium Azide, 50% Glycerol, pH 7.3.
Isotype	IgG
Molecular Weight	Protein Mw: 16kDa Observed Mw: 16kDa
Storage Instruction	Store at -20°C for up to 1 year from the date of receipt, and avoid repeat freeze-thaw cycles.

TARGET INFORMATION

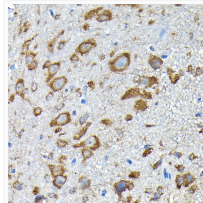
Gene ID	6208
Gene Symbol	RPS14
UniProt ID	RS14_HUMAN
Immunogen Region	1-151
Immunogen Sequence	MAPRKGKEKKEEQVISLGPQ VAEGENVFGVCHIFASFNDT FVHVTDLSGKETICRVTTGGM KVKADRDESSPYAAMLAQD VAQRCKELGITALHIKLRAT GGNRTKTPGPGAQSALRALA RSGMKIGRIEDVTPIPSDST RRGKGGRRGRRL
Specificity	Recombinant fusion protein containing a sequence corresponding to amino acids 1-151 of human RPS14 (NP_005608.1).

ADDITIONAL INFORMATION

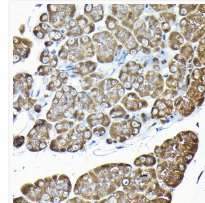
Note **STRICTLY FOR FURTHER SCIENTIFIC RESEARCH USE ONLY (RUO). MUST NOT TO BE USED IN DIAGNOSTIC OR THERAPEUTIC APPLICATIONS.**



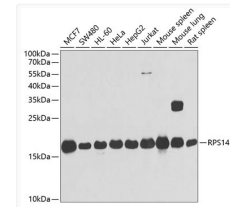
Immunofluorescence analysis of MCF7 cells using RPS14 antibody (STJ28810). Blue: DAPI for nuclear staining.



Immunohistochemistry analysis of paraffin-embedded mouse spinal cord using RPS14 Rabbit polyclonal antibody (STJ28810) at dilution of 1:200 (40x lens). Perform high pressure antigen retrieval with 10 mM citrate buffer pH 6.0 before commencing with immunohistochemistry staining protocol.



Immunohistochemistry analysis of paraffin-embedded rat pancreas using RPS14 Rabbit polyclonal antibody (STJ28810) at dilution of 1:200 (40x lens). Perform high pressure antigen retrieval with 10 mM citrate buffer pH 6.0 before commencing with immunohistochemistry staining protocol.



Western blot analysis of extracts of various cell lines, using RPS14 antibody (STJ28810) at 1:1000 dilution. Secondary antibody: HRP Goat Anti-Rabbit IgG (H+L) (STJ000856) at 1:10000 dilution. Lysates/proteins: 25 Mu g per lane. Blocking buffer: 3% nonfat dry milk in TBST. Detection: ECL Basic Kit. Exposure time: 30s.