

Anti-QPCT antibody (1-361) (STJ28794)

GENERAL INFORMATION

Product Type	Primary antibodies
Applications	WB/IF/ICC/ELISA
Host / Source	Rabbit
Reactivity	Human/Mouse/Rat

PRODUCT PROPERTIES

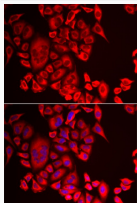
Clonality	Polyclonal
Concentration	Lot specific
Conjugation	Unconjugated
Purification	Affinity purification
Dilution Range	WB:1:500-1:2000 IF/CC:1:50-1:100 ELISA:Recommended starting concentration is 1 Mu g/mL. Please optimize the concentration based on your specific assay requirements.
Formulation	PBS with 0.02% Sodium Azide, 50% Glycerol, pH 7.3.
Isotype	IgG
Molecular Weight	Protein Mw: 41kDa Observed Mw: 41kDa
Storage Instruction	Store at -20°C for up to 1 year from the date of receipt, and avoid repeat freeze-thaw cycles.

TARGET INFORMATION

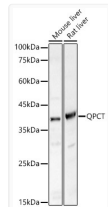
Gene ID	25797
Gene Symbol	QPCT
UniProt ID	QPCT_HUMAN
Immunogen Region	1-361
Immunogen Sequence	MAGGRHRRVVGTLHLLLVLA ALPWASRGVSPSASAWPEEK NYHQPAILNSSLRQIAEGT SISEMWQNDLQPLLIERYPG SPGSYAARQHIMQRIQLQA DWVLEIDTFLSQTPYGYRSF SNIISTLNPTAKRHLVLACH YDSKYFSHWNNRVFVGATDS AVPCAMMLELARALDKLLS LKTVSDSKPDLSQLIFFDG EEAFHWSPQDSLYGSRHLA AKMASTPHPPGARGTSQLH
Specificity	Recombinant fusion protein containing a sequence corresponding to amino acids 1-361 of human QPCT (NP_036545.1).

ADDITIONAL INFORMATION

Note **STRICTLY FOR FURTHER SCIENTIFIC RESEARCH USE ONLY (RUO). MUST NOT TO BE USED IN DIAGNOSTIC OR THERAPEUTIC APPLICATIONS.**



Immunofluorescence analysis of MCF-7 cells using QPCT antibody (STJ28794). Blue: DAPI for nuclear staining.



Western blot analysis of various lysates, using QPCT Rabbit polyclonal antibody (STJ28794) at 1:2500 dilution. Secondary antibody: HRP Goat Anti-Rabbit IgG (H+L) (STJS000856) at 1:10000 dilution. Lysates/proteins: 25 Mu g per lane. Blocking buffer: 3% nonfat dry milk in TBST. Detection: ECL Basic Kit. Exposure time: 90s.