

Anti-PYGL antibody (690-847) (STJ28793)

GENERAL INFORMATION

Product Type	Primary antibodies
Applications	WB/IHC-P/IF/ICC/IP/ELISA
Host / Source	Rabbit
Reactivity	Human/Mouse/Rat

PRODUCT PROPERTIES

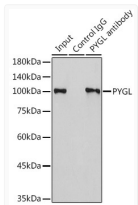
Clonality	Polyclonal
Concentration	Lot specific
Conjugation	Unconjugated
Purification	Affinity purification
Dilution Range	WB:1:500-1:1000 IHC-P:1:50-1:200 IF/CC:1:50-1:200 IP:0.5 Mu g-4 Mu g antibody for 200 Mu g-400 Mu g extracts of whole cells ELISA:Recommended starting concentration is 1 Mu g/mL. Please optimize the concentration based on your specif
Formulation	PBS with 0.09% Sodium Azide, 50% Glycerol, pH 7.3.
Isotype	IgG
Molecular Weight	Protein Mw: 97kDa Observed Mw: 97kDa
Storage Instruction	Store at -20°C for up to 1 year from the date of receipt, and avoid repeat freeze-thaw cycles.

TARGET INFORMATION

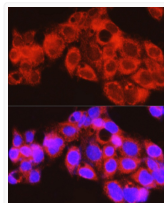
Gene ID	5836
Gene Symbol	PYGL
UniProt ID	PYGL_HUMAN
Immunogen Region	690-847
Immunogen Sequence	IGTMDGANVEMAEAEAGEENL FIFGMRIDDVAALDKKGYEA KEYYEALPELKLVIDQIDNG FFSPKQPDFKDIINMLFYH DRFKVFADYEAYVKCQDKVS QLYMNPKAWNTMVLKNIAS GKFSSDRTIKEYAQNIWNVE PSDLKISLSNESNKVNGN
Specificity	Recombinant fusion protein containing a sequence corresponding to amino acids 690-847 of human PYGL (NP_002854.3).

ADDITIONAL INFORMATION

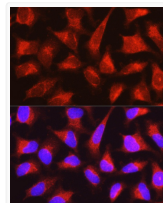
Note STRICTLY FOR FURTHER SCIENTIFIC RESEARCH USE ONLY (RUO). MUST NOT TO BE USED IN DIAGNOSTIC OR THERAPEUTIC APPLICATIONS.



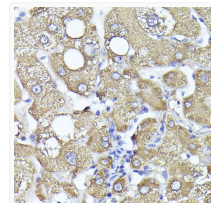
Immunoprecipitation analysis of 300 Mu g extracts of HeLa cells using 3 Mu g PYGL antibody (STJ28793). Western blot was performed from the immunoprecipitate using PYGL antibody (STJ28793) at a dilution of 1:1000.



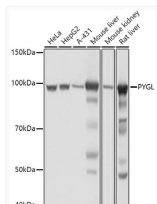
Immunofluorescence analysis of HepG2 cells using PYGL Rabbit polyclonal antibody (STJ28793) at dilution of 1:100 (40x lens). Secondary antibody: Cy3 Goat Anti-Rabbit IgG (H+L) at 1:500 dilution. Blue: DAPI for nuclear staining.



Immunofluorescence analysis of HeLa cells using PYGL Rabbit polyclonal antibody (STJ28793) at dilution of 1:100 (40x lens). Secondary antibody: Cy3 Goat Anti-Rabbit IgG (H+L) at 1:500 dilution. Blue: DAPI for nuclear staining.



Immunohistochemistry analysis of PYGL in paraffin-embedded human liver using PYGL Rabbit polyclonal antibody (STJ28793) at dilution of 1:100 (40x lens). Perform high pressure antigen retrieval with 10 mM citrate buffer pH 6.0 before commencing with immunohistochemistry staining protocol.



Western blot analysis of various lysates using PYGL Rabbit polyclonal antibody (STJ28793) at 1:1000 dilution. Secondary antibody: HRP Goat Anti-Rabbit IgG (H+L) (STJS000856) at 1:10000 dilution. Lysates/proteins: 25 Mu g per lane. Blocking buffer: 3% nonfat dry milk in TBST. Detection: ECL Basic Kit. Exposure time: 1s.