

Anti-PPM1A antibody (161-370) (STJ28782)

GENERAL INFORMATION

Product Type	Primary antibodies
Applications	WB/IF/ICC/ELISA
Host / Source	Rabbit
Reactivity	Human/Mouse/Rat

PRODUCT PROPERTIES

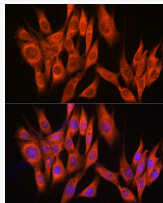
Clonality	Polyclonal
Concentration	Lot specific
Conjugation	Unconjugated
Purification	Affinity purification
Dilution Range	WB:1:500-1:2000 IF/CC:1:50-1:200 ELISA:Recommended starting concentration is 1 μ g/mL. Please optimize the concentration based on your specific assay requirements.
Formulation	PBS with 0.02% Sodium Azide, 50% Glycerol, pH 7.3.
Isotype	IgG
Molecular Weight	Protein Mw: 42kDa Observed Mw: 42kDa
Storage Instruction	Store at -20°C for up to 1 year from the date of receipt, and avoid repeat freeze-thaw cycles.

TARGET INFORMATION

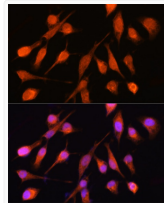
Gene ID	5494
Gene Symbol	PPM1A
UniProt ID	PPM1A_HUMAN
Immunogen Region	161-370
Immunogen Sequence	I L E N V E V K G E K P A K L C V I A E C G E L K E G D D G G I F P K D G S G D S H P D F P E D A D I D L K D V D K I L L I T E D L K N I G N T F F K S Q N W E M A I K K Y A E V L R Y V D S S K A V I E T A D R A K L Q P I A L S C V L N I G A C K L K M S N W Q G A I D S C L E A L E L D P S N T K A L Y R R A Q G W Q G L K E Y D Q A L A D L K K A Q Q I A P E D K A I Q A E L L K V K Q K I K A Q K D K E K A V Y A K M F A
Specificity	Recombinant fusion protein containing a sequence corresponding to amino acids 161-370 of human PPM1A (NP_005029.1).

ADDITIONAL INFORMATION

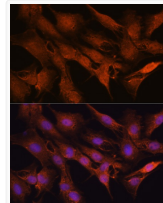
Note **STRICTLY FOR FURTHER SCIENTIFIC RESEARCH USE ONLY (RUO). MUST NOT TO BE USED IN DIAGNOSTIC OR THERAPEUTIC APPLICATIONS.**



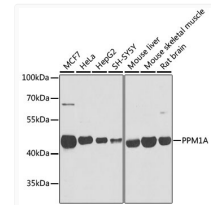
Immunofluorescence analysis of NIH-3T3 cells using PPM1A Rabbit polyclonal antibody (STJ28782) at dilution of 1:100 (40x lens). Blue: DAPI for nuclear staining.



Immunofluorescence analysis of HeLa cells using PPM1A Rabbit polyclonal antibody (STJ28782) at dilution of 1:100 (40x lens). Blue: DAPI for nuclear staining.



Immunofluorescence analysis of C6 cells using PPM1A Rabbit polyclonal antibody (STJ28782) at dilution of 1:100 (40x lens). Blue: DAPI for nuclear staining.



Western blot analysis of extracts of various cell lines, using PPM1A antibody (STJ28782) at 1:1000 dilution. Secondary antibody: HRP Goat Anti-Rabbit IgG (H+L) (STJ5000856) at 1:10000 dilution. Lysates/proteins: 25 μ g per lane. Blocking buffer: 3% nonfat dry milk in TBST. Detection: ECL Basic Kit. Exposure time: 1s.