

Anti-PLA2G2D antibody (21-145) (STJ28773)

GENERAL INFORMATION

Product Type	Primary antibodies
Applications	WB/IHC-P/IF/ICC/ELISA
Host / Source	Rabbit
Reactivity	Human/Mouse/Rat

PRODUCT PROPERTIES

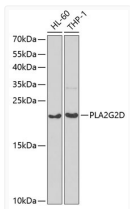
Clonality	Polyclonal
Concentration	Lot specific
Conjugation	Unconjugated
Purification	Affinity purification
Dilution Range	WB:1:500-1:2000 IHC-P:1:50-1:200 IF/ICC:1:10-1:100 ELISA:Recommended starting concentration is 1 µg/mL. Please optimize the concentration based on your specific assay requirements.
Formulation	PBS with 0.09% Sodium Azide, 50% Glycerol, pH7.3.
Isotype	IgG
Molecular Weight	Protein Mw: 17kDa Observed Mw: 20kDa
Storage Instruction	Store at -20°C for up to 1 year from the date of receipt, and avoid repeat freeze-thaw cycles.

TARGET INFORMATION

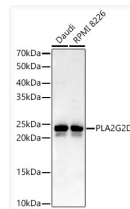
Gene ID	26279
Gene Symbol	PLA2G2D
UniProt ID	PA2GD_HUMAN
Immunogen Region	21-145
Immunogen Sequence	GILNLNKMKVKQVTGKMPILS YWPGCHCGLGGRGQPKDAT DWCCQTHDCCYDHLKTQGCS IYKDYRYRNFSGNIHCSDK GSWCEQQLCACDKEVAFCLK RNLDYQKRLRFYWRPHCRG QTPGC
Specificity	Recombinant fusion protein containing a sequence corresponding to amino acids 21-145 of human PLA2G2D (NP_036532.1).

ADDITIONAL INFORMATION

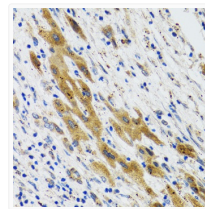
Note **STRICTLY FOR FURTHER SCIENTIFIC RESEARCH USE ONLY (RUO). MUST NOT TO BE USED IN DIAGNOSTIC OR THERAPEUTIC APPLICATIONS.**



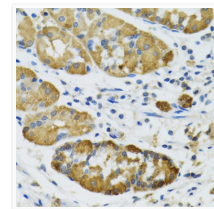
Western blot analysis of various lysates using PLA2G2D Rabbit pAb (STJ28773) at 1:1000 dilution.
Secondary antibody: HRP-conjugated Goat anti-Rabbit IgG (H+L) (STJS000856) at 1:10000 dilution.
Lysates/proteins: 25 µg per lane.
Blocking buffer: 3% nonfat dry milk in TBST.
Detection: ECL Basic Kit
Exposure time: 90s.



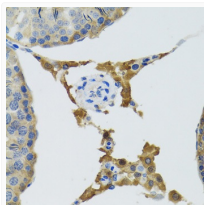
Western blot analysis of various lysates, using PLA2G2D Rabbit pAb (STJ28773) at 1:400 dilution.
Secondary antibody: HRP-conjugated Goat anti-Rabbit IgG (H+L) (STJS000856) at 1:10000 dilution.
Lysates/proteins: 25 µg per lane.
Blocking buffer: 3% nonfat dry milk in TBST.
Detection: ECL Enhanced Kit
Exposure time: 60s.



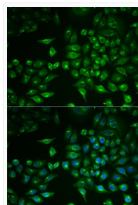
Immunohistochemistry analysis of paraffin-embedded Human liver cancer using PLA2G2D Rabbit pAb (STJ28773) at dilution of 1:100 (40x lens). Microwave antigen retrieval performed with 0.01M PBS Buffer (pH 7.2) prior to immunohistochemistry staining.



Immunohistochemistry analysis of paraffin-embedded Human stomach using PLA2G2D Rabbit pAb (STJ28773) at dilution of 1:100 (40x lens). Microwave antigen retrieval performed with 0.01M PBS Buffer (pH 7.2) prior to immunohistochemistry staining.



Immunohistochemistry analysis of paraffin-embedded Mouse testis using PLA2G2D Rabbit pAb (STJ28773) at dilution of 1:100 (40x lens). Microwave antigen retrieval performed with 0.01M PBS Buffer (pH 7.2) prior to immunohistochemistry staining.



Immunofluorescence analysis of MCF7 cells using PLA2G2D Rabbit pAb (STJ28773). Secondary antibody: Cy3-conjugated Goat anti-Rabbit IgG (H+L) (STJS001166) at 1:500 dilution. Blue: DAPI for nuclear staining.