

Anti-PIKFYVE antibody (269-545) (STJ28772)

GENERAL INFORMATION

Product Type	Primary antibodies
Applications	WB/ELISA
Host / Source	Rabbit
Reactivity	Human/Mouse/Rat

PRODUCT PROPERTIES

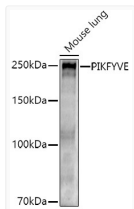
Clonality	Polyclonal
Concentration	Lot specific
Conjugation	Unconjugated
Purification	Affinity purification
Dilution Range	WB:1:100-1:500 ELISA:Recommended starting concentration is 1 μ g/mL. Please optimize the concentration based on your specific assay requirements.
Formulation	PBS with 0.05% Proclin300, 50% Glycerol, pH 7.3.
Isotype	IgG
Molecular Weight	Protein Mw: 237kDa Observed Mw: 250kDa
Storage Instruction	Store at -20°C for up to 1 year from the date of receipt, and avoid repeat freeze-thaw cycles.

TARGET INFORMATION

Gene ID	200576
Gene Symbol	PIKFYVE
UniProt ID	FYV1_HUMAN
Immunogen Region	269-545
Immunogen Sequence	DLAWQSLIHPDSSNTPLSTR LVSVQEDAGKSPARNRSASI TNLSLDRSGSPMVPSYETSV SPQANRTYVRTETTEDERKI LLDVSVQLKDLWKKICHSSG MEFQDHRWLRTHPNCIVGK ELVNWLIRNGHIATRAQAIA IGQAMVDGRWLDVSHHDQL FRDEYALYRPLQSTEFSETP SPDSDSVNSVEGHSEPSWFK DIKFDDSDTEQIAEEGDDNL ANSASPSKRTSVSSSQSTV
Specificity	Recombinant fusion protein containing a sequence corresponding to amino acids 269-545 of human PIKFYVE (NP_055855.2).

ADDITIONAL INFORMATION

Note **STRICTLY FOR FURTHER SCIENTIFIC RESEARCH USE ONLY (RUO). MUST NOT TO BE USED IN DIAGNOSTIC OR THERAPEUTIC APPLICATIONS.**



Western blot analysis of lysates from Mouse lung, using PIKFYVE Rabbit polyclonal antibody (STJ28772) at 1:500 dilution. Secondary antibody: HRP Goat Anti-Rabbit IgG (H+L) (STJS000856) at 1:10000 dilution. Lysates/proteins: 25 μ g per lane. Blocking buffer: 3% nonfat dry milk in TBST. Detection: ECL Basic Kit. Exposure time: 180s.