

## Anti-PIK3CG antibody (130-342) (STJ28771)

### GENERAL INFORMATION

Product Type	Primary antibodies
Applications	WB/IHC-P/IF/ICC/ELISA
Host / Source	Rabbit
Reactivity	Human/Mouse/Rat

### PRODUCT PROPERTIES

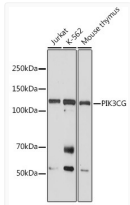
Clonality	Polyclonal
Concentration	Lot specific
Conjugation	Unconjugated
Purification	Affinity purification
Dilution Range	WB:1:500-1:1000 IHC-P:1:50-1:200 IF/CC:1:50-1:200 ELISA:Recommended starting concentration is 1 $\mu$ g/mL. Please optimize the concentration based on your specific assay requirements.
Formulation	PBS with 0.09% Sodium Azide, 50% Glycerol, pH 7.3.
Isotype	IgG
Molecular Weight	Protein Mw: 126kDa Observed Mw: 110kDa
Storage Instruction	Store at -20°C for up to 1 year from the date of receipt, and avoid repeat freeze-thaw cycles.

### TARGET INFORMATION

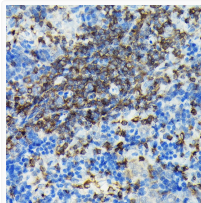
Gene ID	<a href="#">5294</a>
Gene Symbol	<a href="#">PIK3CG</a>
UniProt ID	<a href="#">PK3CG_HUMAN</a>
Immunogen Region	130-342
Immunogen Sequence	RSPGQIHLVQRHPPSEESQA FQRQLTALIGYDVTDVSNVH DDELEFTRRGLVTPRMAEVA SRDPKLYAMHPWVTSKPLPE YLWKKIANNCIFIVHRSTT SQTIKVSPDDTPGAILQSFF TKMAKKKSLMDIPESQSEQD FVLRVCGRDEYLVGETPIKN FQWVRHCLKNGEEIHVVLDT PPDPALDEVKKEEWPLVDDC TGVTGYHEQLTIH
Specificity	Recombinant fusion protein containing a sequence corresponding to amino acids 130-342 of human PIK3CG (NP_002640.2).

### ADDITIONAL INFORMATION

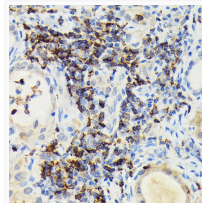
Note STRICTLY FOR FURTHER SCIENTIFIC RESEARCH USE ONLY (RUO). MUST NOT TO BE USED IN DIAGNOSTIC OR THERAPEUTIC APPLICATIONS.



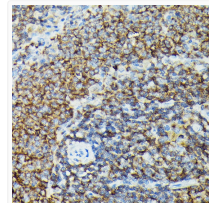
Western blot analysis of extracts of various cell lines, using PIK3CG antibody (STJ28771) at 1:1000 dilution. Secondary antibody: HRP Goat Anti-rabbit IgG (H+L) (STJS000856) at 1:10000 dilution. Lysates/proteins: 25  $\mu$ g per lane. Blocking buffer: 3% non-fat dry milk in TBST. Detection: ECL Basic Kit. Exposure time: 180s.



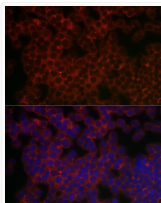
Immunohistochemistry analysis of paraffin-embedded rat spleen using PIK3CG rabbit polyclonal antibody (STJ28771) at dilution of 1:100 (40x lens). Perform high pressure antigen retrieval with 10 mM citrate buffer pH 6.0 before commencing with immunohistochemistry staining protocol.



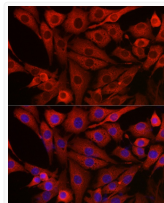
Immunohistochemistry analysis of paraffin-embedded human thyroid cancer using PIK3CG rabbit polyclonal antibody (STJ28771) at dilution of 1:100 (40x lens). Perform high pressure antigen retrieval with 10 mM citrate buffer pH 6.0 before commencing with immunohistochemistry staining protocol.



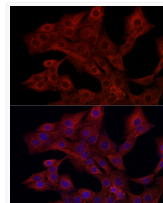
Immunohistochemistry analysis of paraffin-embedded mouse spleen using PIK3CG rabbit polyclonal antibody (STJ28771) at dilution of 1:100 (40x lens). Perform high pressure antigen retrieval with 10 mM citrate buffer pH 6.0 before commencing with immunohistochemistry staining protocol.



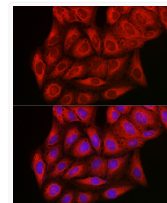
Immunofluorescence analysis of Jurkat cells using PIK3CG rabbit polyclonal antibody (STJ28771) at dilution of 1:50 (40x lens). Blue: DAPI for nuclear staining.



Immunofluorescence analysis of NIH/3T3 cells using PIK3CG rabbit polyclonal antibody (STJ28771) at dilution of 1:50 (40x lens). Blue: DAPI for nuclear staining.



Immunofluorescence analysis of PC-12 cells using PIK3CG rabbit polyclonal antibody (STJ28771) at dilution of 1:50 (40x lens). Blue: DAPI for nuclear staining.



Immunofluorescence analysis of U2OS cells using PIK3CG rabbit polyclonal antibody (STJ28771) at dilution of 1:50 (40x lens). Blue: DAPI for nuclear staining.