

## Anti-NR2C1 antibody (1-240) (STJ28758)

### GENERAL INFORMATION

Product Type	Primary antibodies
Applications	WB/IF/ICC/ELISA
Host / Source	Rabbit
Reactivity	Human/Mouse

### PRODUCT PROPERTIES

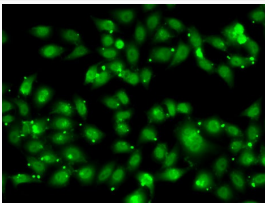
Clonality	Polyclonal
Concentration	Lot specific
Conjugation	Unconjugated
Purification	Affinity purification
Dilution Range	WB:1:500-1:1000 IF/ICC:1:50-1:200 ELISA:Recommended starting concentration is 1 $\mu$ g/mL. Please optimize the concentration based on your specific assay requirements.
Formulation	PBS with 0.02% Sodium Azide, 50% Glycerol, pH 7.3.
Isotype	IgG
Molecular Weight	Protein Mw: 67kDa Observed Mw: 52kDa
Storage Instruction	Store at -20°C for up to 1 year from the date of receipt, and avoid repeat freeze-thaw cycles.

### TARGET INFORMATION

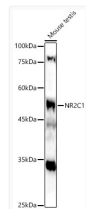
Gene ID	<a href="#">7181</a>
Gene Symbol	<a href="#">NR2C1</a>
UniProt ID	<a href="#">NR2C1_HUMAN</a>
Immunogen Region	1-240
Immunogen Sequence	MATIEEIAHQIIEQQMGEIV TEQQTGQKIQIVTALDHNTQ GKQFILTNHGSGTPSKVILA RQDSTPGKVFLLTPDAAGVN QLFFTPDLSAQHLQLLTDN SPDQGNKVFVDFLCVVCGDKA SGRHYGAVTCEGCKGFFKRS IRKNLVYSCRGSKDCIINKH HRNRCQYCRQRQCIAFGMKQ DSVQCERKPIEVSREKSSNC AASTEKIYIRKDLRSPLTAT PTFVTDSESTRSTGLLDG
Specificity	Recombinant fusion protein containing a sequence corresponding to amino acids 1-240 of human NR2C1 (NP_003288.2).

### ADDITIONAL INFORMATION

Note STRICTLY FOR FURTHER SCIENTIFIC RESEARCH USE ONLY (RUO). MUST NOT TO BE USED IN DIAGNOSTIC OR THERAPEUTIC APPLICATIONS.



Immunofluorescence analysis of MCF7 cells using NR2C1 antibody (STJ28758).



Western blot analysis of Mouse testis, using NR2C1 antibody (STJ28758) at 1:1000 dilution. Secondary antibody: HRP Goat Anti-Rabbit IgG (H+L) (STJS000856) at 1:10000 dilution. Lysates/proteins: 25  $\mu$ g per lane. Blocking buffer: 3% nonfat dry milk in TBST. Detection: ECL Basic Kit. Exposure time: 90s.