

Anti-NFKB1 antibody (41-365) (STJ28750)

GENERAL INFORMATION

Product Type	Primary antibodies
Applications	WB/IHC-P/IF/ICC/ELISA
Host / Source	Rabbit
Reactivity	Human/Mouse/Rat

PRODUCT PROPERTIES

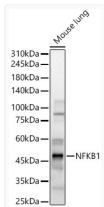
Clonality	Polyclonal
Concentration	Lot specific
Conjugation	Unconjugated
Purification	Affinity purification
Dilution Range	WB:1:500-1:1000 IHC-P:1:50-1:200 IF/CC:1:50-1:200 ELISA:Recommended starting concentration is 1 Mu g/mL. Please optimize the concentration based on your specific assay requirements.
Formulation	PBS with 0.05% Proclin300, 50% Glycerol, pH 7.3.
Isotype	IgG
Molecular Weight	Protein Mw: 105kDa Observed Mw: 50kDa/120kDa
Storage Instruction	Store at -20°C for up to 1 year from the date of receipt, and avoid repeat freeze-thaw cycles.

TARGET INFORMATION

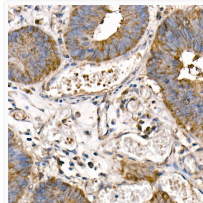
Gene ID	4790
Gene Symbol	NFKB1
UniProt ID	NFKB1_HUMAN
Immunogen Region	41-365
Immunogen Sequence	GPYLQILEQPKQRGFRFRYV CEGPSHGGGLPGASSEKNKKS YPQVKICNYVGPAAKIVIVQLV TNGKNIHLHAHSLVGKHCED GICTVTAGPKDMVVGANLG ILHVTKKKVFETLEARMTEA CIRGYNPGLLVHPDLAYLQA EGGGDRQLGDREKELIRQAA LQQTKEMDLSVVRLMFTAFL PDSTGSFTRRLPEVVSDAIY DSKAPNASNLKIVRMDRTAG CVTGGEEIYLLCDKVQKDD
Specificity	A synthetic peptide corresponding to a sequence within amino acids 41-365 of human NFKB1 (NP_001158884.1).

ADDITIONAL INFORMATION

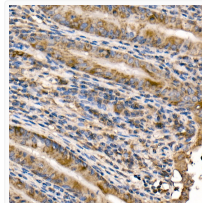
Note STRICTLY FOR FURTHER SCIENTIFIC RESEARCH USE ONLY (RUO). MUST NOT TO BE USED IN DIAGNOSTIC OR THERAPEUTIC APPLICATIONS.



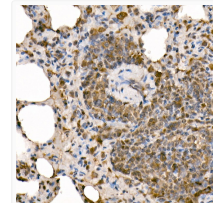
Western blot analysis of mouse lung, using NFKB1 antibody (STJ28750) at 1:500 dilution. Secondary antibody: HRP Goat Anti-rabbit IgG (H+L) (STJS000856) at 1:10000 dilution. Lysates/proteins: 25 Mu g per lane. Blocking buffer: 3% non-fat dry milk in TBST. Detection: ECL Basic Kit. Exposure time: 20s.



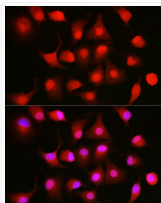
Immunohistochemistry analysis of paraffin-embedded human colon carcinoma using NFKB1 rabbit polyclonal antibody (STJ28750) at dilution of 1:50 (40x lens). Perform high pressure antigen retrieval with 10 mM citrate buffer pH 6. 0 before commencing with immunohistochemistry staining protocol.



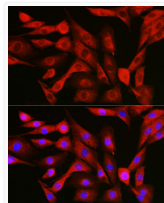
Immunohistochemistry analysis of paraffin-embedded mouse intestine using NFKB1 rabbit polyclonal antibody (STJ28750) at dilution of 1:50 (40x lens). Perform high pressure antigen retrieval with 10 mM citrate buffer pH 6. 0 before commencing with immunohistochemistry staining protocol.



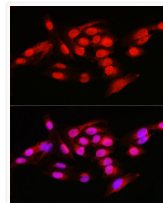
Immunohistochemistry analysis of paraffin-embedded rat lung using NFKB1 rabbit polyclonal antibody (STJ28750) at dilution of 1:50 (40x lens). Perform high pressure antigen retrieval with 10 mM citrate buffer pH 6. 0 before commencing with immunohistochemistry staining protocol.



Immunofluorescence analysis of A-549 cells using NFKB1 rabbit polyclonal antibody (STJ28750) at dilution of 1:50 (40x lens). Blue: DAPI for nuclear staining.



Immunofluorescence analysis of NIH/3T3 cells using NFKB1 rabbit polyclonal antibody (STJ28750) at dilution of 1:50 (40x lens). Blue: DAPI for nuclear staining.



Immunofluorescence analysis of U2OS cells using NFKB1 rabbit polyclonal antibody (STJ28750) at dilution of 1:50 (40x lens). Blue: DAPI for nuclear staining.