

Anti-MLPH antibody (301-600) (STJ28739)

GENERAL INFORMATION

Product Type	Primary antibodies
Applications	WB/IHC-P/IF/ICC/ELISA
Host / Source	Rabbit
Reactivity	Human/Mouse/Rat

PRODUCT PROPERTIES

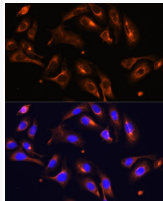
Clonality	Polyclonal
Concentration	Lot specific
Conjugation	Unconjugated
Purification	Affinity purification
Dilution Range	WB:1:500-1:2000 IHC-P:1:50-1:200 IF/ICC:1:50-1:200 ELISA:Recommended starting concentration is 1 Mu g/mL. Please optimize the concentration based on your specific assay requirements.
Formulation	PBS with 0.02% Sodium Azide, 50% Glycerol, pH 7.3.
Isotype	IgG
Molecular Weight	Protein Mw: 66kDa Observed Mw: 75kDa
Storage Instruction	Store at -20°C for up to 1 year from the date of receipt, and avoid repeat freeze-thaw cycles.

TARGET INFORMATION

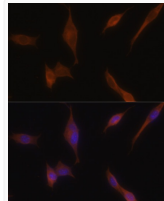
Gene ID	79083
Gene Symbol	MLPH
UniProt ID	MELPH_HUMAN
Immunogen Region	301-600
Immunogen Sequence	EQLPLQYLADVDTSDDEESIR AHVMASHHSKRRGRASSESQ IFELNKHISAVECLLYLEN TVVPPLAKGLGAGVREADV EEEALRRKLEELTSNVSDQE TSSEEEAKDEKAEPNRDKS VGPLPQADPEVGTAAHQTNR QEKSPQDPGDPVQYNRTTDE ELSELEDRVAVTASEVQQAE SEVSDIESRIAALRAAGLTV KPSGKPRRKSNLPIFLPRVA GKLGKRPEDPNADPSSEAK
Specificity	Recombinant fusion protein containing a sequence corresponding to amino acids 301-600 of human MLPH (NP_077006.1).

ADDITIONAL INFORMATION

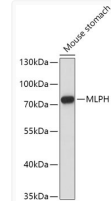
Note STRICTLY FOR FURTHER SCIENTIFIC RESEARCH USE ONLY (RUO). MUST NOT TO BE USED IN DIAGNOSTIC OR THERAPEUTIC APPLICATIONS.



Immunofluorescence analysis of U-2 OS cells using MLPH antibody (STJ28739) at dilution of 1:100. Blue: DAPI for nuclear staining.



Immunofluorescence analysis of NIH-3T3 cells using MLPH antibody (STJ28739) at dilution of 1:100. Blue: DAPI for nuclear staining.



Western blot analysis of extracts of Mouse stomach, using MLPH antibody (STJ28739) at 1:1000 dilution. Secondary antibody: HRP Goat Anti-Rabbit IgG (H+L) (STJS000856) at 1:10000 dilution. Lysates/proteins: 25 Mu g per lane. Blocking buffer: 3% nonfat dry milk in TBST. Detection: ECL Basic Kit. Exposure time: 180s.