

Anti-MGLL antibody (11-313) (STJ28737)

GENERAL INFORMATION

| | |
|---------------|--------------------|
| Product Type | Primary antibodies |
| Applications | WB/IHC-P/ELISA |
| Host / Source | Rabbit |
| Reactivity | Human/Mouse/Rat |

PRODUCT PROPERTIES

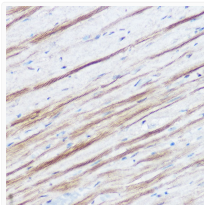
| | |
|---------------------|--|
| Clonality | Polyclonal |
| Concentration | Lot specific |
| Conjugation | Unconjugated |
| Purification | Affinity purification |
| Dilution Range | WB:1:500-1:1000 IHC-P:1:50-1:200 ELISA:Recommended starting concentration is 1 Mu g/mL. Please optimize the concentration based on your specific assay requirements. |
| Formulation | PBS with 0.09% Sodium Azide, 50% Glycerol, pH 7.3. |
| Isotype | IgG |
| Molecular Weight | Protein Mw: 33kDa Observed Mw: 33kDa |
| Storage Instruction | Store at -20°C for up to 1 year from the date of receipt, and avoid repeat freeze-thaw cycles. |

TARGET INFORMATION

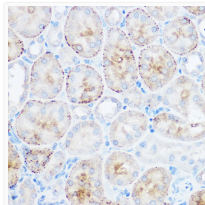
| | |
|--------------------|---|
| Gene ID | 11343 |
| Gene Symbol | MGLL |
| UniProt ID | MGLL_HUMAN |
| Immunogen Region | 11-313 |
| Immunogen Sequence | MPEESSPRRTPQSIPYQDLP HLVNADGQYLFCRYWKPTGT PKALIFVSHGAGEHSGRYEE LARMLMGLDLLVFAHDHVGH GQSEGERMVSDFHVFVRDV LQHVDSMQKDYPGLPVLLG HSMGGAIILTAERP GHFA GMVLISPLVLANPESATTFK VLAAKVNLVLPNLSLGPID SSVLSRNKTEVDIYNSDPLI CRAGLKVCFGIQLLNAVSRV ERALPKLTVPFLLLQGSAD |
| Specificity | Recombinant fusion protein containing a sequence corresponding to amino acids 11-313 of human MGLL (NP_009214.1). |

ADDITIONAL INFORMATION

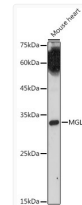
Note **STRICTLY FOR FURTHER SCIENTIFIC RESEARCH USE ONLY (RUO). MUST NOT TO BE USED IN DIAGNOSTIC OR THERAPEUTIC APPLICATIONS.**



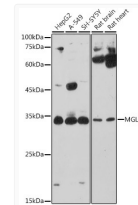
Immunohistochemistry analysis of paraffin-embedded mouse heart using MGLL Rabbit polyclonal antibody (STJ28737) at dilution of 1:50 (40x lens). Perform high pressure antigen retrieval with 10 mM citrate buffer pH 6.0 before commencing with immunohistochemistry staining protocol.



Immunohistochemistry analysis of paraffin-embedded mouse kidney using MGLL Rabbit polyclonal antibody (STJ28737) at dilution of 1:50 (40x lens). Perform high pressure antigen retrieval with 10 mM citrate buffer pH 6.0 before commencing with immunohistochemistry staining protocol.



Western blot analysis of extracts of Mouse heart, using MGLL antibody (STJ28737) at 1:1000 dilution. Secondary antibody: HRP Goat Anti-Rabbit IgG (H+L) (STJS000856) at 1:10000 dilution. Lysates/proteins: 25 Mu g per lane. Blocking buffer: 3% nonfat dry milk in TBST. Detection: ECL Enhanced Kit. Exposure time: 180s.



Western blot analysis of extracts of various cell lines, using MGLL antibody (STJ28737) at 1:1000 dilution. Secondary antibody: HRP Goat Anti-Rabbit IgG (H+L) (STJS000856) at 1:10000 dilution. Lysates/proteins: 25 Mu g per lane. Blocking buffer: 3% nonfat dry milk in TBST. Detection: ECL Basic Kit. Exposure time: 180s.