

Anti-KHDRBS3 antibody (177-346) (STJ28720)

GENERAL INFORMATION

Product Type	Primary antibodies
Applications	WB/IF/ICC/ELISA
Host / Source	Rabbit
Reactivity	Human/Mouse

PRODUCT PROPERTIES

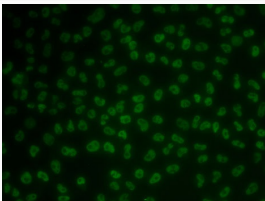
Clonality	Polyclonal
Concentration	Lot specific
Conjugation	Unconjugated
Purification	Affinity purification
Dilution Range	WB:1:500-1:2000 IF/CC:1:50-1:100 ELISA:Recommended starting concentration is 1 μ g/mL. Please optimize the concentration based on your specific assay requirements.
Formulation	PBS with 0.02% Sodium Azide, 50% Glycerol, pH 7.3.
Isotype	IgG
Molecular Weight	Protein Mw: 39kDa Observed Mw: 39kDa
Storage Instruction	Store at -20°C for up to 1 year from the date of receipt, and avoid repeat freeze-thaw cycles.

TARGET INFORMATION

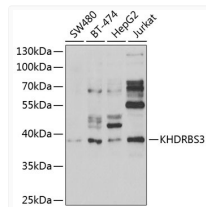
Gene ID	10656
Gene Symbol	KHDRBS3
UniProt ID	KHDR3_HUMAN
Immunogen Region	177-346
Immunogen Sequence	GSEADVPVVRGKPTLRTRG VPAPAITRGRGGVTARPVGV VVPRGTPTRGVLSTRGPVS RGRGLLTPRARGVPPTGYRP PPPPTQETYGEYDYYDDGYG TAYDEQSYDSYDNSYSTPAQ SGADYYDYGHGLSEETYDSY GQEEWTNSRHKAPSARTAKG VYRDQPYGRY
Specificity	Recombinant fusion protein containing a sequence corresponding to amino acids 177-346 of human KHDRBS3 (NP_006549.1).

ADDITIONAL INFORMATION

Note STRICTLY FOR FURTHER SCIENTIFIC RESEARCH USE ONLY (RUO). MUST NOT TO BE USED IN DIAGNOSTIC OR THERAPEUTIC APPLICATIONS.



Immunofluorescence analysis of MCF7 cells using KHDRBS3 antibody (STJ28720).



Western blot analysis of extracts of various cell lines, using KHDRBS3 antibody (STJ28720) at 1:1000 dilution. Secondary antibody: HRP Goat Anti-Rabbit IgG (H+L) (STJS000856) at 1:10000 dilution. Lysates/proteins: 25 μ g per lane. Blocking buffer: 3% nonfat dry milk in TBST. Detection: ECL Enhanced Kit. Exposure time: 90s.