

Anti-KCNH1 antibody (813-962) (STJ28719)

GENERAL INFORMATION

| | |
|---------------|--------------------|
| Product Type | Primary antibodies |
| Applications | WB/ELISA |
| Host / Source | Rabbit |
| Reactivity | Human/Mouse/Rat |

PRODUCT PROPERTIES

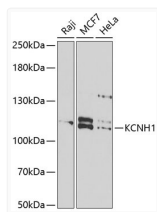
| | |
|---------------------|--|
| Clonality | Polyclonal |
| Concentration | Lot specific |
| Conjugation | Unconjugated |
| Purification | Affinity purification |
| Dilution Range | WB:1:500-1:2000 ELISA:Recommended starting concentration is 1 µg/mL. Please optimize the concentration based on your specific assay requirements. |
| Formulation | PBS with 0.02% Sodium Azide, 50% Glycerol, pH 7.3. |
| Isotype | IgG |
| Molecular Weight | Protein Mw: 111kDa Observed Mw: 111kDa |
| Storage Instruction | Store at -20°C for up to 1 year from the date of receipt, and avoid repeat freeze-thaw cycles. |

TARGET INFORMATION

| | |
|--------------------|---|
| Gene ID | 3756 |
| Gene Symbol | KCNH1 |
| UniProt ID | KCNH1_HUMAN |
| Immunogen Region | 813-962 |
| Immunogen Sequence | FKDACGKSEDWNVKSKAESM ETLPERTKASGEATLKKTDSDSGITKSDLRLDNVGEARS PQDRSPILAEVKHSFYPIPE QTLQATVLEVRHELKEDIKA LNAKMTNIEKQLSEILRILT SRRSSQSPQELFEISRPQSP ESERDIFGAS |
| Specificity | Recombinant fusion protein containing a sequence corresponding to amino acids 813-962 of human KCNH1 (NP_002229.1). |

ADDITIONAL INFORMATION

Note STRICTLY FOR FURTHER SCIENTIFIC RESEARCH USE ONLY (RUO). MUST NOT TO BE USED IN DIAGNOSTIC OR THERAPEUTIC APPLICATIONS.



Western blot analysis of extracts of various cell lines, using KCNH1 antibody (STJ28719) at 1:1000 dilution. Secondary antibody: HRP Goat Anti-Rabbit IgG (H+L) (STJS000856) at 1:10000 dilution. Lysates/proteins: 25 µg per lane. Blocking buffer: 3% nonfat dry milk in TBST. Detection: ECL Basic Kit. Exposure time: 90s.