

Anti-HOXB1 antibody (35-180) (STJ28702)

GENERAL INFORMATION

Product Type	Primary antibodies
Applications	WB/IF/ICC/ELISA
Host / Source	Rabbit
Reactivity	Human/Mouse/Rat

PRODUCT PROPERTIES

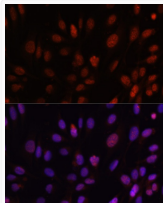
Clonality	Polyclonal
Concentration	Lot specific
Conjugation	Unconjugated
Purification	Affinity purification
Dilution Range	WB:1:2000-1:4000 IF/ICC:1:50-1:200 ELISA:Recommended starting concentration is 1 Mu g/mL. Please optimize the concentration based on your specific assay requirements.
Formulation	PBS with 0.02% Sodium Azide, 50% Glycerol, pH 7.3.
Isotype	IgG
Molecular Weight	Protein Mw: 32kDa Observed Mw: 32kDa
Storage Instruction	Store at -20°C for up to 1 year from the date of receipt, and avoid repeat freeze-thaw cycles.

TARGET INFORMATION

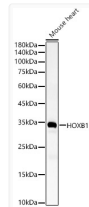
Gene ID	3211
Gene Symbol	HOXB1
UniProt ID	HXB1_HUMAN
Immunogen Region	35-180
Immunogen Sequence	SAQAVDSYASEGRYGGGLSS PAFQQNSGYPAQQPPSTLGV PFPSSAPSGYAPAACSPSYG PSQYYPLGQSEGDGGYFHPS SYGAQLGGLSDGYGAGGAGP GPYPQHPHYGNEQTASFAP AYADLLSEDKETPCPSEPNT PTARTF
Specificity	Recombinant fusion protein containing a sequence corresponding to amino acids 35-180 of human HOXB1 (NP_002135.2).

ADDITIONAL INFORMATION

Note **STRICTLY FOR FURTHER SCIENTIFIC RESEARCH USE ONLY (RUO). MUST NOT TO BE USED IN DIAGNOSTIC OR THERAPEUTIC APPLICATIONS.**



Immunofluorescence analysis of U-2 OS cells using HOXB1 antibody (STJ28702) at dilution of 1:100. Blue: DAPI for nuclear staining.



Western blot analysis of Mouse heart, using HOXB1 antibody (STJ28702) at 1:4000 dilution. Secondary antibody: HRP Goat Anti-Rabbit IgG (H+L) (STJS000856) at 1:10000 dilution. Lysates/proteins: 25 Mu g per lane. Blocking buffer: 3% nonfat dry milk in TBST. Detection: ECL Basic Kit. Exposure time: 30s.