

Anti-GPLD1 antibody (24-160) (STJ28695)

GENERAL INFORMATION

Product Type	Primary antibodies
Applications	WB/IHC-P/IF/ICC/ELISA
Host / Source	Rabbit
Reactivity	Human/Mouse/Rat

PRODUCT PROPERTIES

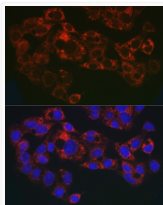
Clonality	Polyclonal
Concentration	Lot specific
Conjugation	Unconjugated
Purification	Affinity purification
Dilution Range	WB:1:100-1:500 IHC-P:1:50-1:200 IF/CC:1:50-1:200 ELISA:Recommended starting concentration is 1 μ g/mL. Please optimize the concentration based on your specific assay requirements.
Formulation	PBS with 0.09% Sodium Azide, 50% Glycerol, pH7.3.
Isotype	IgG
Molecular Weight	Protein Mw: 92kDa Observed Mw: 100kDa
Storage Instruction	Store at -20°C for up to 1 year from the date of receipt, and avoid repeat freeze-thaw cycles.

TARGET INFORMATION

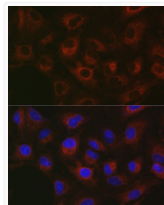
Gene ID	2822
Gene Symbol	GPLD1
UniProt ID	PHLD_HUMAN
Immunogen Region	24-160
Immunogen Sequence	CGLSTHVEIGHRALEFLQLH NGRVNYRELLEHQDAYQAG IVFPDCFYPSICKGGKFHDV SESTHWTPFLNASVHYIREN YLPWWEKDTEKLVAFVLFGIT SHMAADVSWHSLGLEQGFRLR TMGAIDFHGYSYEAHSA
Specificity	Recombinant fusion protein containing a sequence corresponding to amino acids 24-160 of human GPLD1 (NP_001494.2).

ADDITIONAL INFORMATION

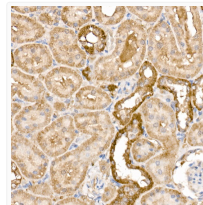
Note **STRICTLY FOR FURTHER SCIENTIFIC RESEARCH USE ONLY (RUO). MUST NOT TO BE USED IN DIAGNOSTIC OR THERAPEUTIC APPLICATIONS.**



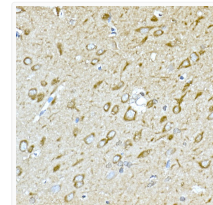
Immunofluorescence analysis of HepG2 cells using GPLD1 Rabbit polyclonal antibody (STJ28695) at dilution of 1:50 (40x lens). Blue: DAPI for nuclear staining.



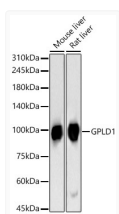
Immunofluorescence analysis of A-549 cells using GPLD1 Rabbit polyclonal antibody (STJ28695) at dilution of 1:50 (40x lens). Blue: DAPI for nuclear staining.



Immunohistochemistry analysis of paraffin-embedded rat kidney using GPLD1 Rabbit polyclonal antibody (STJ28695) at dilution of 1:100 (40x lens). Perform high pressure antigen retrieval with 10 mM citrate buffer pH 6.0 before commencing with immunohistochemistry staining protocol.



Immunohistochemistry analysis of paraffin-embedded rat brain using GPLD1 Rabbit polyclonal antibody (STJ28695) at dilution of 1:100 (40x lens). Perform high pressure antigen retrieval with 10 mM citrate buffer pH 6.0 before commencing with immunohistochemistry staining protocol.



Western blot analysis of various lysates, using GPLD1 antibody (STJ28695) at 1:400 dilution. Secondary antibody: HRP Goat Anti-Rabbit IgG (H+L) (STJS000856) at 1:10000 dilution. Lysates/proteins: 25 μ g per lane. Blocking buffer: 3% nonfat dry milk in TBST. Detection: ECL Basic Kit. Exposure time: 90s.