

Anti-GATM antibody (38-423) (STJ28681)

GENERAL INFORMATION

Product Type	Primary antibodies
Applications	WB/IHC-P/IF/ICC/ELISA
Host / Source	Rabbit
Reactivity	Human/Mouse/Rat

PRODUCT PROPERTIES

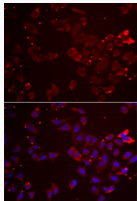
Clonality	Polyclonal
Concentration	Lot specific
Conjugation	Unconjugated
Purification	Affinity purification
Dilution Range	WB:1:500-1:2000 IHC-P:1:50-1:200 IF/ICC:1:50-1:200 ELISA:Recommended starting concentration is 1 µg/mL. Please optimize the concentration based on your specific assay requirements.
Formulation	PBS with 0.02% Sodium Azide, 50% Glycerol, pH 7.3.
Isotype	IgG
Molecular Weight	Protein Mw: 48kDa Observed Mw: 48kDa
Storage Instruction	Store at -20°C for up to 1 year from the date of receipt, and avoid repeat freeze-thaw cycles.

TARGET INFORMATION

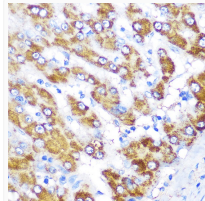
Gene ID	2628
Gene Symbol	GATM
UniProt ID	GATM_HUMAN
Immunogen Region	38-423
Immunogen Sequence	STQAATASSRNSCAADDKAT EPLPKDCPVSSYNEWDPLEE VIVGRAENACVPPFTIEVKA NTYEKYWPFYQKGGHYFPK DHLKKAVAEIEEMCNILKTE GVTVRRPDPIDWLSLKYKTPD FESTGLYSAMPRDILIVVGN EII EAPMAWRSRFFEYRAYR SIIKDYFHRGAKWTTAPKPT MADELYNQDYPIHSVEDRHK LAAQGKFVTTEFEPFCDAAD FIRAGRDIFAQRSQVTNYL
Specificity	Recombinant fusion protein containing a sequence corresponding to amino acids 38-423 of human GATM (NP_001473.1?).

ADDITIONAL INFORMATION

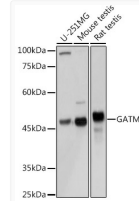
Note	STRICTLY FOR FURTHER SCIENTIFIC RESEARCH USE ONLY (RUO). MUST NOT TO BE USED IN DIAGNOSTIC OR THERAPEUTIC APPLICATIONS.
------	---



Immunofluorescence analysis of A549 cells using GATM Rabbit polyclonal antibody (STJ28681). Secondary antibody: Cy3 Goat Anti-Rabbit IgG (H+L) at 1:500 dilution. Blue: DAPI for nuclear staining.



Immunohistochemistry analysis of GATM in paraffin-embedded human liver using GATM Rabbit polyclonal antibody (STJ28681) at dilution of 1:100 (40x lens). Perform microwave antigen retrieval with 10 mM PBS buffer pH 7.2 before commencing with immunohistochemistry staining protocol.



Western blot analysis of various lysates using GATM Rabbit polyclonal antibody (STJ28681) at 1:3000 dilution. Secondary antibody: HRP Goat Anti-Rabbit IgG (H+L) (STJS000856) at 1:10000 dilution. Lysates/proteins: 25 µg per lane. Blocking buffer: 3% nonfat dry milk in TBST. Detection: ECL Basic Kit. Exposure time: 1s.