

Anti-CRHBP antibody (25-322) (STJ28651)

GENERAL INFORMATION

Product Type	Primary antibodies
Applications	WB/IHC-P/IF/ICC/ELISA
Host / Source	Rabbit
Reactivity	Human/Mouse/Rat

PRODUCT PROPERTIES

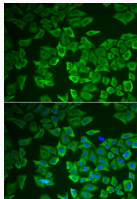
Clonality	Polyclonal
Concentration	Lot specific
Conjugation	Unconjugated
Purification	Affinity purification
Dilution Range	WB:1:1000-1:5000 IHC-P:1:100-1:500 IF/CC:1:50-1:100 ELISA:Recommended starting concentration is 1 Mu g/mL. Please optimize the concentration based on your specific assay requirements.
Formulation	PBS with 0.02% Sodium Azide, 50% Glycerol, pH 7.3.
Isotype	IgG
Molecular Weight	Protein Mw: 36kDa Observed Mw: 37kDa
Storage Instruction	Store at -20°C for up to 1 year from the date of receipt, and avoid repeat freeze-thaw cycles.

TARGET INFORMATION

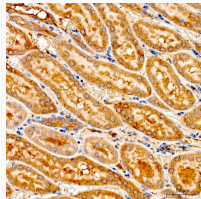
Gene ID	1393
Gene Symbol	CRHBP
UniProt ID	CRHBP_HUMAN
Immunogen Region	25-322
Immunogen Sequence	YLELREAADYDPFLLSANL KRELAGEQPYRRALRCLDML SLQGQFTFTADRPQLHCAAF FISEPEEFITIHVDQVSIDC QGGDFLKVFDGWILKGEKFP SSQDHPPLPSAERYIDFCESG LSRRSIRSSQNVAMIFFRVH EPGNGFTLTIKTDPNLFPCN VISQTPNGKFTLVVPHQHRN CSFSIYPVVIKISDLTLGH VNGLQLKSSAGCEGIGDFV ELLGGTGLDPSKMTPLADL
Specificity	Recombinant fusion protein containing a sequence corresponding to amino acids 25-322 of human CRHBP (NP_001873.2).

ADDITIONAL INFORMATION

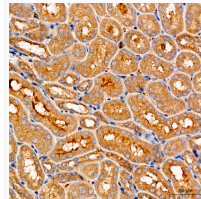
Note **STRICTLY FOR FURTHER SCIENTIFIC RESEARCH USE ONLY (RUO). MUST NOT TO BE USED IN DIAGNOSTIC OR THERAPEUTIC APPLICATIONS.**



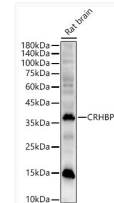
Immunofluorescence analysis of HeLa cells using CRHBP antibody (STJ28651). Blue: DAPI for nuclear staining.



Immunohistochemistry analysis of CRHBP in paraffin-embedded rat kidney tissue using CRHBP Rabbit polyclonal antibody (STJ28651) at a dilution of 1:300 (40x lens). High pressure antigen retrieval was performed with 0.01 M citrate buffer (pH 6.0) prior to immunohistochemistry staining.



Immunohistochemistry analysis of CRHBP in paraffin-embedded mouse kidney tissue using CRHBP Rabbit polyclonal antibody (STJ28651) at a dilution of 1:300 (40x lens). High pressure antigen retrieval was performed with 0.01 M citrate buffer (pH 6.0) prior to immunohistochemistry staining.



Western blot analysis of Rat brain, using CRHBP Rabbit polyclonal antibody (STJ28651) at 1:2000 dilution. Secondary antibody: HRP Goat Anti-Rabbit IgG (H+L) (STJS000856) at 1:10000 dilution. Lysates/proteins: 25 Mu g per lane. Blocking buffer: 3% nonfat dry milk in TBST. Detection: ECL Enhanced Kit. Exposure time: 60s.