

## Anti-COL9A1 antibody (20-270) (STJ28646)

### GENERAL INFORMATION

Product Type	Primary antibodies
Applications	WB/ELISA
Host / Source	Rabbit
Reactivity	Rat

### PRODUCT PROPERTIES

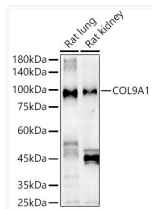
Clonality	Polyclonal
Concentration	Lot specific
Conjugation	Unconjugated
Purification	Affinity purification
Dilution Range	WB:1:500-1:1000 ELISA:Recommended starting concentration is 1 µg/mL. Please optimize the concentration based on your specific assay requirements.
Formulation	PBS with 0.02% Sodium Azide, 50% Glycerol, pH 7.3.
Isotype	IgG
Molecular Weight	Protein Mw: 92kDa Observed Mw: 92kDa
Storage Instruction	Store at -20°C for up to 1 year from the date of receipt, and avoid repeat freeze-thaw cycles.

### TARGET INFORMATION

Gene ID	<a href="#">1297</a>
Gene Symbol	<a href="#">COL9A1</a>
UniProt ID	<a href="#">CO9A1_HUMAN</a>
Immunogen Region	20-270
Immunogen Sequence	WASAAVKRRPRFPVNSNSNG GNELCPKIRIGQDDLPGFDL ISQFQVDKAASRRAIQRVVG SATLQVAYKLGNNVDFRIPT RNLYPSGLPEEYSFLTTFRM TGSTLKKWNWIWQIQDSSGK EQVGIKINGQTQSVVFSYKGDGSLQTAAFSNLSSLFDSQ WHKIMIGVERSSATLFDVDCN RIESLPIKPRGPIDIDGFAV LGKLADNPQVSVPFELQWML IHCDPLRPRRETCHELPAR
Specificity	Recombinant fusion protein containing a sequence corresponding to amino acids 20-270 of human COL9A1 (NP_001842.3).

### ADDITIONAL INFORMATION

Note **STRICTLY FOR FURTHER SCIENTIFIC RESEARCH USE ONLY (RUO). MUST NOT TO BE USED IN DIAGNOSTIC OR THERAPEUTIC APPLICATIONS.**



Western blot analysis of extracts of various cell lines, using COL9A1 Rabbit polyclonal antibody (STJ28646) at 1:1000 dilution. Secondary antibody: HRP Goat Anti-Rabbit IgG (H+L) (STJS000856) at 1:10000 dilution. Lysates/proteins: 25 µg per lane. Blocking buffer: 3% nonfat dry milk in TBST. Detection: ECL Basic Kit. Exposure time: 90s.