

Anti-CCT4 antibody (130-390) (STJ28631)

GENERAL INFORMATION

Product Type	Primary antibodies
Applications	WB/IF/ICC/ELISA
Host / Source	Rabbit
Reactivity	Human/Mouse/Rat

PRODUCT PROPERTIES

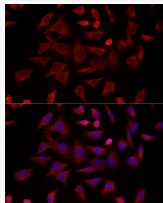
Clonality	Polyclonal
Concentration	Lot specific
Conjugation	Unconjugated
Purification	Affinity purification
Dilution Range	WB:1:500-1:2000 IF/CC:1:100-1:500 ELISA:Recommended starting concentration is 1 μ g/mL. Please optimize the concentration based on your specific assay requirements.
Formulation	PBS with 0.02% Sodium Azide, 50% Glycerol, pH 7.3.
Isotype	IgG
Molecular Weight	Protein Mw: 58kDa Observed Mw: 60kDa
Storage Instruction	Store at -20°C for up to 1 year from the date of receipt, and avoid repeat freeze-thaw cycles.

TARGET INFORMATION

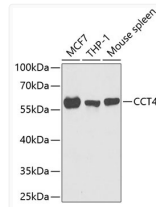
Gene ID	10575
Gene Symbol	CCT4
UniProt ID	TCPD_HUMAN
Immunogen Region	130-390
Immunogen Sequence	PTIISESFQKALEKIEILT DMSRPVELSDRETLNSATT SLNSKVVSQYSSLLSPMSVN AVMKVIDPATATSVDLRDIK IVKLLGGTIDDCELVGLVL TQKVSNSGITRVEKAKIGLI QFCLSAPKTDMDNQIVSDY AQMDRVLREERAYILNLVKQ IKKTGCNVLIIQKSILRDAL SDLALHFLNKMIMVIKDIE REDIEFICKTIGTKPVAHID QFTADMLGSAELAEVNLN
Specificity	Recombinant fusion protein containing a sequence corresponding to amino acids 130-390 of human CCT4 (NP_006421.2).

ADDITIONAL INFORMATION

Note STRICTLY FOR FURTHER SCIENTIFIC RESEARCH USE ONLY (RUO). MUST NOT TO BE USED IN DIAGNOSTIC OR THERAPEUTIC APPLICATIONS.



Immunofluorescence analysis of HeLa cells using CCT4 Rabbit polyclonal antibody (STJ28631) at dilution of 1:300 (40x lens). Blue: DAPI for nuclear staining.



Western blot analysis of extracts of various cell lines, using CCT4 antibody (STJ28631) at 1:1000 dilution. Secondary antibody: HRP Goat Anti-Rabbit IgG (H+L) (STJS000856) at 1:10000 dilution. Lysates/proteins: 25 μ g per lane. Blocking buffer: 3% nonfat dry milk in TBST. Detection: ECL Basic Kit. Exposure time: 90s.