

Anti-CCT2 antibody (206-535) (STJ28629)

GENERAL INFORMATION

Product Type	Primary antibodies
Applications	WB/IF/ICC/IP/ELISA
Host / Source	Rabbit
Reactivity	Human/Mouse

PRODUCT PROPERTIES

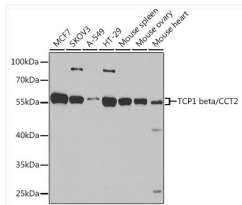
Clonality	Polyclonal
Concentration	Lot specific
Conjugation	Unconjugated
Purification	Affinity purification
Dilution Range	WB:1:500-1:2000 IF/CC:1:50-1:200 IP:0.5 Mu g-4 Mu g antibody for 200 Mu g-400 Mu g extracts of whole cells ELISA:Recommended starting concentration is 1 Mu g/mL. Please optimize the concentration based on your specific assay requirements
Formulation	PBS with 0.09% Sodium Azide, 50% Glycerol, pH7.3.
Isotype	IgG
Molecular Weight	Protein Mw: 57kDa Observed Mw: 57kDa
Storage Instruction	Store at -20°C for up to 1 year from the date of receipt, and avoid repeat freeze-thaw cycles.

TARGET INFORMATION

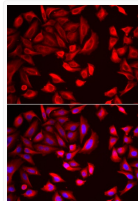
Gene ID	10576
Gene Symbol	CCT2
UniProt ID	TCPB_HUMAN
Immunogen Region	206-535
Immunogen Sequence	GGSLADSYLDEGFLLDKKIG VNOPKRIENAKILIAN TGMD TDKIKIFGSRVRVDSTAKVA EIEHAEKEKMKKEKVERILKH GINCFINRQLIYNYPEQLFG AAGVMAIEHADDFAGVERLAL VTGGEIASTFDHPELVKLGSKLIEEVMIGEDKLIHFSGV ALGEACTIVLRGATQQILDE AERSLHDALCVLAQTVKDSR TVYGGGCSSEMLMAHAVTQLA NRTPGKEAVAMESYAKALR
Specificity	Recombinant fusion protein containing a sequence corresponding to amino acids 206-535 of human TCP1 beta/TCP1 beta/CCT2 (NP_006422.1).

ADDITIONAL INFORMATION

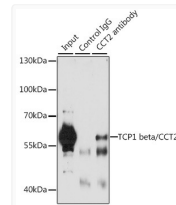
Note STRICTLY FOR FURTHER SCIENTIFIC RESEARCH USE ONLY (RUO). MUST NOT TO BE USED IN DIAGNOSTIC OR THERAPEUTIC APPLICATIONS.



Western blot analysis of various lysates using TCP1 beta/CCT2 Rabbit pAb (STJ28629) at 1:1000 dilution.
Secondary antibody: HRP-conjugated Goat anti-Rabbit IgG (H+L) (STJS000856) at 1:10000 dilution.
Lysates/proteins: 25 Mu g per lane.
Blocking buffer: 3% nonfat dry milk in TBST.
Detection: ECL Basic Kit
Exposure time: 15s.



Immunofluorescence analysis of HeLa cells using TCP1 beta/CCT2 Rabbit pAb (STJ28629).
Secondary antibody: Cy3-conjugated Goat anti-Rabbit IgG (H+L) (STJS001166) at 1:500 dilution.
Blue: DAPI for nuclear staining.



Immunoprecipitation analysis of 200 Mu g extracts of A-549 cells, using 3 Mu g TCP1 beta/TCP1 beta/CCT2 antibody (STJ28629). Western blot was performed from the immunoprecipitate using TCP1 beta/TCP1 beta/CCT2 antibody (STJ28629) at a dilution of 1:1000.