

Anti-CALU antibody (20-315) (STJ28621)

GENERAL INFORMATION

Product Type	Primary antibodies
Applications	WB/IHC-P/IF/ICC/ELISA
Host / Source	Rabbit
Reactivity	Human/Mouse/Rat

PRODUCT PROPERTIES

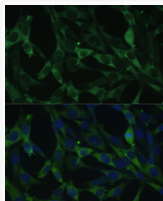
Clonality	Polyclonal
Concentration	Lot specific
Conjugation	Unconjugated
Purification	Affinity purification
Dilution Range	WB:1:500-1:2000 IHC-P:1:50-1:100 IF/CC:1:50-1:200 ELISA:Recommended starting concentration is 1 Mu g/mL. Please optimize the concentration based on your specific assay requirements.
Formulation	PBS with 0.02% Sodium Azide, 50% Glycerol, pH 7.3.
Isotype	IgG
Molecular Weight	Protein Mw: 37kDa Observed Mw: 50kDa
Storage Instruction	Store at -20°C for up to 1 year from the date of receipt, and avoid repeat freeze-thaw cycles.

TARGET INFORMATION

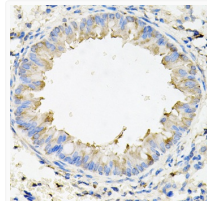
Gene ID	813
Gene Symbol	CALU
UniProt ID	CALU_HUMAN
Immunogen Region	20-315
Immunogen Sequence	KPTEKDRVHHEPQLSDKVH NDAQSFDYDHD AFLGAEAK TFDQLTPEESKERLGKIVSK IDGDKDGFVTVDELKDWIKF AQKRWIYEDVERQWKGHDLN EDGLVSWEEYKNATYGYVLD DPDPDDGFNYKQMMVRDERR FKMADKDGDLIATKEEFTAF LHPEEYDYMKDIVVQETMED IDKNADGFIDLEEYIGDMYS HDGNTDEPEVWKTEREQFVE FRDKNRDGMKDKEETKDWI
Specificity	Recombinant fusion protein containing a sequence corresponding to amino acids 20-315 of human CALU (NP_001210.1).

ADDITIONAL INFORMATION

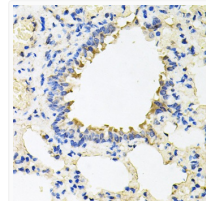
Note **STRICTLY FOR FURTHER SCIENTIFIC RESEARCH USE ONLY (RUO). MUST NOT TO BE USED IN DIAGNOSTIC OR THERAPEUTIC APPLICATIONS.**



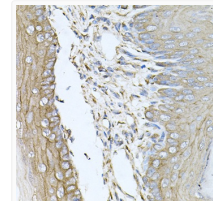
Immunofluorescence analysis of NIH-3T3 cells using CALU antibody (STJ28621) at dilution of 1:100. Blue: DAPI for nuclear staining.



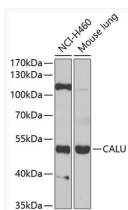
Immunohistochemistry analysis of paraffin-embedded mouse lung using CALU antibody (STJ28621) at dilution of 1:100 (40x lens). Perform microwave antigen retrieval with 10 mM PBS buffer pH 7. 2 before commencing with immunohistochemistry staining protocol.



Immunohistochemistry analysis of paraffin-embedded rat lung using CALU antibody (STJ28621) at dilution of 1:100 (40x lens). Perform microwave antigen retrieval with 10 mM PBS buffer pH 7. 2 before commencing with immunohistochemistry staining protocol.



Immunohistochemistry analysis of paraffin-embedded mouse skin using CALU antibody (STJ28621) at dilution of 1:100 (40x lens). Perform microwave antigen retrieval with 10 mM PBS buffer pH 7. 2 before commencing with immunohistochemistry staining protocol.



Western blot analysis of extracts of various cell lines, using CALU antibody (STJ28621) at 1:1000 dilution. _Secondary antibody: HRP Goat Anti-Rabbit IgG (H+L) (STJS000856) at 1:10000 dilution. _Lysates/proteins: 25 Mu g per lane. _Blocking buffer: 3% nonfat dry milk in TBST. _Detection: ECL Basic Kit. _Exposure time: 90s.