

## Anti-GRK1 antibody (1-160) (STJ28580)

### GENERAL INFORMATION

Product Type	Primary antibodies
Applications	WB/IHC-P/IF/ICC/ELISA
Host / Source	Rabbit
Reactivity	Human/Mouse/Rat

### PRODUCT PROPERTIES

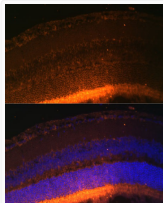
Clonality	Polyclonal
Concentration	Lot specific
Conjugation	Unconjugated
Purification	Affinity purification
Dilution Range	WB:1:200-1:2000 IHC-P:1:50-1:200 IF/CC:1:50-1:200 ELISA:Recommended starting concentration is 1 Mu g/mL. Please optimize the concentration based on your specific assay requirements.
Formulation	PBS with 0.02% Sodium Azide, 50% Glycerol, pH 7.3.
Isotype	IgG
Molecular Weight	Protein Mw: 64kDa Observed Mw: 65kDa
Storage Instruction	Store at -20°C for up to 1 year from the date of receipt, and avoid repeat freeze-thaw cycles.

### TARGET INFORMATION

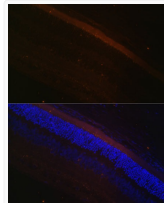
Gene ID	<a href="#">6011</a>
Gene Symbol	<a href="#">GRK1</a>
UniProt ID	<a href="#">GRK1_HUMAN</a>
Immunogen Region	1-160
Immunogen Sequence	MDFGSLETVVANSAFIAARG SFDGSSSQPSRDKKYLAKLK LPPLSKCESLRDLSLEFES VCLEQPIGKKLFQQFLQSAE KHLPALELWKDIEDYDTADN DLQPQKAQTILAQYLDPQAK LFCNFLDEGIVAKFKEGPVE IQDGLFQPLLQATLAHLGQA
Specificity	Recombinant fusion protein containing a sequence corresponding to amino acids 1-160 of human GRK1 (NP_002920.1).

### ADDITIONAL INFORMATION

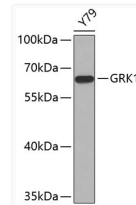
Note **STRICTLY FOR FURTHER SCIENTIFIC RESEARCH USE ONLY (RUO). MUST NOT TO BE USED IN DIAGNOSTIC OR THERAPEUTIC APPLICATIONS.**



Immunofluorescence analysis of mouse retina using GRK1 Polyclonal Antibody (STJ28580) at dilution of 1:100 (40x lens). Blue: DAPI for nuclear staining.



Immunofluorescence analysis of rat retina using GRK1 Polyclonal Antibody (STJ28580) at dilution of 1:100 (40x lens). Blue: DAPI for nuclear staining.



Western blot analysis of extracts of Y79 cells, using GRK1 antibody (STJ28580). Secondary antibody: HRP Goat Anti-Rabbit IgG (H+L) (STJS000856) at 1:10000 dilution. Lysates/proteins: 25 Mu g per lane. Blocking buffer: 3% nonfat dry milk in TBST.