

Anti-FLCN antibody (341-579) (STJ28576)

GENERAL INFORMATION

Product Type	Primary antibodies
Applications	WB/ELISA
Host / Source	Rabbit
Reactivity	Human

PRODUCT PROPERTIES

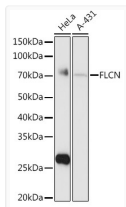
Clonality	Polyclonal
Concentration	Lot specific
Conjugation	Unconjugated
Purification	Affinity purification
Dilution Range	WB:1:500-1:1000 ELISA:Recommended starting concentration is 1 Mu g/mL. Please optimize the concentration based on your specific assay requirements.
Formulation	PBS with 0.09% Sodium Azide, 50% Glycerol, pH 7.3.
Isotype	IgG
Molecular Weight	Protein Mw: 64kDa Observed Mw: 70kDa
Storage Instruction	Store at -20°C for up to 1 year from the date of receipt, and avoid repeat freeze-thaw cycles.

TARGET INFORMATION

Gene ID	201163
Gene Symbol	FLCN
UniProt ID	FLCN_HUMAN
Immunogen Region	341-579
Immunogen Sequence	RKLPVFKSLRHMRQVLGAPS FRMLAWHVLGMGNQVIWKS RD VDLVQS SAFEVLR TMLPVGCV RIIPYSSQYEEAYRCNFLGL SPHVQIPPHVLSSEFAVIVE VHAAARSTLHPVGCEDDQSL SKYEFVVTSGSPVAADRVGP TILNKIEAALTQNQLSVDVV DQCLVCLKEEWMNKVKVLFK FTKVDSRPKEDTQKLLSILG ASEEDNVKLLKFWMTGLSKT YKSHLMSTVRSPTASESRN
Specificity	Recombinant fusion protein containing a sequence corresponding to amino acids 341-579 of human FLCN (NP_659434.2).

ADDITIONAL INFORMATION

Note **STRICTLY FOR FURTHER SCIENTIFIC RESEARCH USE ONLY (RUO). MUST NOT TO BE USED IN DIAGNOSTIC OR THERAPEUTIC APPLICATIONS.**



Western blot analysis of extracts of various cell lines, using FLCN antibody (STJ28576) at 1:1000 dilution. Secondary antibody: HRP Goat Anti-Rabbit IgG (H+L) (STJS000856) at 1:10000 dilution. Lysates/proteins: 25 Mu g per lane. Blocking buffer: 3% nonfat dry milk in TBST. Detection: ECL Basic Kit. Exposure time: 1s.