

## Anti-SMYD2 antibody (1-270) (STJ28557)

### GENERAL INFORMATION

Product Type	Primary antibodies
Applications	WB/IF/ICC/ELISA
Host / Source	Rabbit
Reactivity	Human/Mouse

### PRODUCT PROPERTIES

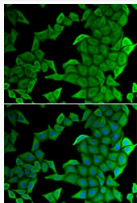
Clonality	Polyclonal
Concentration	Lot specific
Conjugation	Unconjugated
Purification	Affinity purification
Dilution Range	WB:1:500-1:2000 IF/CC:1:10-1:100 ELISA:Recommended starting concentration is 1 Mu g/mL. Please optimize the concentration based on your specific assay requirements.
Formulation	PBS with 0.02% Sodium Azide, 50% Glycerol, pH 7.3.
Isotype	IgG
Molecular Weight	Protein Mw: 50kDa Observed Mw: 50kDa
Storage Instruction	Store at -20°C for up to 1 year from the date of receipt, and avoid repeat freeze-thaw cycles.

### TARGET INFORMATION

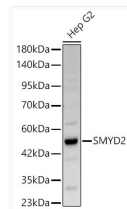
Gene ID	<a href="#">56950</a>
Gene Symbol	<a href="#">SMYD2</a>
UniProt ID	<a href="#">SMYD2_HUMAN</a>
Immunogen Region	1-270
Immunogen Sequence	MRAEGLGGLERFCSPGKGRG LRALQPFQVGDLLFSCPAYA YVLTVNERGNHCEYCFTRKE GLSKGGRCKQAFYCNVECQK EDWPMHKLECSPMVVFGENW NPSETVRLTARILAKQKIHP ERTPSEKLLAVKEFESHLDK LDNEKKDLIQSDIAALHHFY SKHLGFPPDNDLSLVLFAQVN CNGFTIEDEELSHLGS AIFP DVALMNHSCCPNVIVTYKGT LAEVRAVQEIKPGEVFTS
Specificity	Recombinant fusion protein containing a sequence corresponding to amino acids 1-270 of human SMYD2 (NP_064582.2).

### ADDITIONAL INFORMATION

Note STRICTLY FOR FURTHER SCIENTIFIC RESEARCH USE ONLY (RUO). MUST NOT TO BE USED IN DIAGNOSTIC OR THERAPEUTIC APPLICATIONS.



Immunofluorescence analysis of U2OS cells using SMYD2 antibody (STJ28557). Blue: DAPI for nuclear staining.



Western blot analysis of Hep G2, using SMYD2 Rabbit polyclonal antibody (STJ28557) at 1:2000 dilution. Secondary antibody: HRP Goat Anti-Rabbit IgG (H+L) (STJS000856) at 1:10000 dilution. Lysates/proteins: 25ug per lane. Blocking buffer: 3% nonfat dry milk in TBST. Detection: ECL Basic Kit. Exposure time: 45s.