

## Anti-ACSS2 antibody (462-701) (STJ28555)

### GENERAL INFORMATION

Product Type	Primary antibodies
Applications	WB/IF/ICC/ELISA
Host / Source	Rabbit
Reactivity	Human/Mouse/Rat

### PRODUCT PROPERTIES

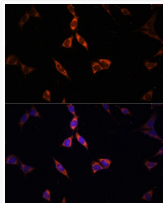
Clonality	Polyclonal
Concentration	Lot specific
Conjugation	Unconjugated
Purification	Affinity purification
Dilution Range	WB:1:500-1:2000 IF/CC:1:50-1:200 ELISA:Recommended starting concentration is 1 µg/mL. Please optimize the concentration based on your specific assay requirements.
Formulation	PBS with 0.01% Thimerosal, 50% Glycerol, pH 7.3.
Isotype	IgG
Molecular Weight	Protein Mw: 79kDa Observed Mw: 78kDa
Storage Instruction	Store at -20°C for up to 1 year from the date of receipt, and avoid repeat freeze-thaw cycles.

### TARGET INFORMATION

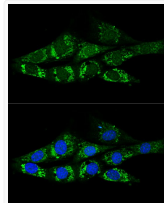
Gene ID	<a href="#">55902</a>
Gene Symbol	<a href="#">ACSS2</a>
UniProt ID	<a href="#">ACSA_HUMAN</a>
Immunogen Region	462-701
Immunogen Sequence	VDTFWQTETGGHMLTPLPGA TPMKPGSATFPFFGVAPAIL NESGEELEGEAEGYLVFKQP WPGIMRTVYGNHERFETTYF KKFPGYYVTGDGCQRDQDGY YWITGRIDMLNVSGHLLST AEVESALVEHEAVAEAAVVG HPHVPKGECLYCFVTLCDGH TFSFKLTELKQIREKIGP IATPDYIQNAPGLPKTRSGK IMRRVLRKIAQNDHDLGDMS TVADPSVISHLFSHRLTI
Specificity	Recombinant fusion protein containing a sequence corresponding to amino acids 462-701 of human ACSS2 (NP_061147.1).

### ADDITIONAL INFORMATION

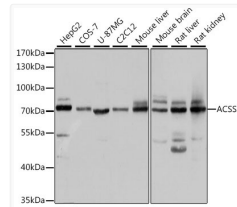
Note STRICTLY FOR FURTHER SCIENTIFIC RESEARCH USE ONLY (RUO). MUST NOT TO BE USED IN DIAGNOSTIC OR THERAPEUTIC APPLICATIONS.



Immunofluorescence analysis of NIH-3T3 cells using ACSS2 Rabbit polyclonal antibody (STJ28555) at dilution of 100 (40x lens). Secondary antibody: Cy3 Goat Anti-Rabbit IgG (H+L) at 1:500 dilution. Blue: DAPI for nuclear staining.



Confocal immunofluorescence analysis of NIH-3T3 cells using ACSS2 Rabbit polyclonal antibody (STJ28555) at dilution of 1:200. Blue: DAPI for nuclear staining.



Western blot analysis of various lysates using ACSS2 Rabbit polyclonal antibody (STJ28555) at 1:1000 dilution. Secondary antibody: HRP Goat Anti-Rabbit IgG (H+L) (STJS000856) at 1:10000 dilution. Lysates/proteins: 25 µg per lane. Blocking buffer: 3% nonfat dry milk in TBST. Detection: ECL Basic Kit. Exposure time: 5s.