

Anti-TCN1 antibody (24-280) (STJ28497)

GENERAL INFORMATION

Product Type	Primary antibodies
Applications	WB/ELISA
Host / Source	Rabbit
Reactivity	Human/Mouse/Rat

PRODUCT PROPERTIES

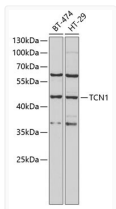
Clonality	Polyclonal
Concentration	Lot specific
Conjugation	Unconjugated
Purification	Affinity purification
Dilution Range	WB:1:500-1:2000 ELISA:Recommended starting concentration is 1 Mu g/mL. Please optimize the concentration based on your specific assay requirements.
Formulation	PBS with 0.02% Sodium Azide, 50% Glycerol, pH 7.3.
Isotype	IgG
Molecular Weight	Protein Mw: 48kDa Observed Mw: 48kDa
Storage Instruction	Store at-20°C for up to 1 year from the date of receipt, and avoid repeat freeze-thaw cycles.

TARGET INFORMATION

Gene ID	6947
Gene Symbol	TCN1
UniProt ID	TCO1_HUMAN
Immunogen Region	24-280
Immunogen Sequence	EICEVSEENYIRLKPLLNTM IQSNYNRGTSAVNVVLSLKL VGIQIQLTMQKMIQKIKYNV KSRLSDVSSGELALILALG VCRNAEENLIYDYHLIDKLE NKFQAEIENMEAHNGTPLTN YYQLSLDLVALCLFNGNYST AEVVNHFTPENKNYYFGSQF SVDTGAMAVLALTCVKKSLI NGQIKADEGSLKNISITYTKS LVEKILSEKKENGLIGNTFSS TGEAMQALFVSSDYNNEND
Specificity	Recombinant fusion protein containing a sequence corresponding to amino acids 24-280 of human TCN1 (NP_001053.2).

ADDITIONAL INFORMATION

Note **STRICTLY FOR FURTHER SCIENTIFIC RESEARCH USE ONLY (RUO). MUST NOT TO BE USED IN DIAGNOSTIC OR THERAPEUTIC APPLICATIONS.**



Western blot analysis of various lysates using TCN1 Rabbit polyclonal antibody (STJ28497) at 1:1000 dilution. Secondary antibody: HRP Goat Anti-Rabbit IgG (H+L) (STJS000856) at 1:10000 dilution. Lysates/proteins: 25 Mu g per lane. Blocking buffer: 3% nonfat dry milk in TBST. Detection: ECL Basic Kit. Exposure time: 10s.