

Anti-SSRP1 antibody (1-300) (STJ28496)

GENERAL INFORMATION

Product Type	Primary antibodies
Applications	WB/IHC-P/IF/ICC/ELISA
Host / Source	Rabbit
Reactivity	Human/Mouse

PRODUCT PROPERTIES

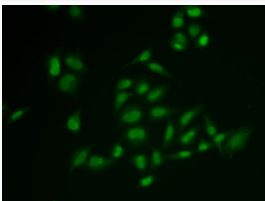
Clonality	Polyclonal
Concentration	Lot specific
Conjugation	Unconjugated
Purification	Affinity purification
Dilution Range	WB:1:500-1:1000 IHC-P:1:50-1:200 IF/CC:1:10-1:100 ELISA:Recommended starting concentration is 1 μ g/mL. Please optimize the concentration based on your specific assay requirements.
Formulation	PBS with 0.02% Sodium Azide, 50% Glycerol, pH 7.3.
Isotype	IgG
Molecular Weight	Protein Mw: 81kDa Observed Mw: 90kDa
Storage Instruction	Store at -20°C for up to 1 year from the date of receipt, and avoid repeat freeze-thaw cycles.

TARGET INFORMATION

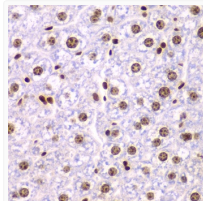
Gene ID	6749
Gene Symbol	SSRP1
UniProt ID	SSRP1_HUMAN
Immunogen Region	1-300
Immunogen Sequence	MAETLEFNDVYQEVKGSMD GRLRLSRQGIIFKNSKTGKV DNIQAGELTEGIWRRVALGH GLKLLTKNGHVYKYDGFRES EFEKLSDFFKTHYRLELMEK DLCVKGWNWGTVKFGGQLLS FDIGDQPVFEIPLSNVSQCT TGKNEVTLEFHQNDDAEVS L MEVRFYVPPQTQEDGVDPVEA FAQNVLSKADVIQATGDAIC IFRELQCLTPRGRYDIRIYP TFLHLHGKTFDYKIPYTTV
Specificity	Recombinant fusion protein containing a sequence corresponding to amino acids 1-300 of human SSRP1 (NP_003137.1).

ADDITIONAL INFORMATION

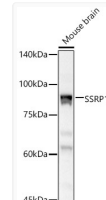
Note STRICTLY FOR FURTHER SCIENTIFIC RESEARCH USE ONLY (RUO). MUST NOT TO BE USED IN DIAGNOSTIC OR THERAPEUTIC APPLICATIONS.



Immunofluorescence analysis of U2OS cells using SSRP1 antibody (STJ28496).



Immunohistochemistry analysis of paraffin-embedded mouse liver using SSRP1 antibody (STJ28496) at dilution of 1:200 (40x lens). Perform microwave antigen retrieval with 10 mM PBS buffer pH 7.2 before commencing with immunohistochemistry staining protocol.



Western blot analysis of extracts of Mouse brain, using SSRP1 Rabbit polyclonal antibody (STJ28496) at 1:500 dilution. Secondary antibody: HRP Goat Anti-Rabbit IgG (H+L) (STJS000856) at 1:10000 dilution. Lysates/proteins: 25 μ g per lane. Blocking buffer: 3% nonfat dry milk in TBST. Detection: ECL Basic Kit. Exposure time: 5s.