

## Anti-SPN antibody (276-400) (STJ28495)

### GENERAL INFORMATION

|               |                       |
|---------------|-----------------------|
| Product Type  | Primary antibodies    |
| Applications  | WB/IHC-P/IF/ICC/ELISA |
| Host / Source | Rabbit                |
| Reactivity    | Human/Mouse/Rat       |

### PRODUCT PROPERTIES

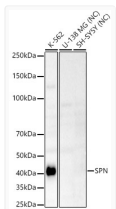
|                     |  |
|---------------------|--|
| Clonality           | Polyclonal   |
| Concentration       | Lot specific   |
| Conjugation         | Unconjugated   |
| Purification        | Affinity purification  |
| Dilution Range      | WB:1:500-1:1000<br>IHC-P:1:50-1:200<br>IF/CC:1:50-1:200<br>ELISA:Recommended starting concentration is 1 µg/mL. Please optimize the concentration based on your specific assay requirements. |
| Formulation         | PBS with 0.05% Proclin300, 50% Glycerol, pH7.3.  |
| Isotype             | IgG  |
| Molecular Weight    | Protein Mw: 40kDa<br>Observed Mw: 115-130kDa   |
| Storage Instruction | Store at -20°C for up to 1 year from the date of receipt, and avoid repeat freeze-thaw cycles.   |

### TARGET INFORMATION

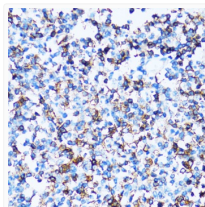
|                    |  |
|--------------------|--|
| Gene ID            | <a href="#">6693</a>   |
| Gene Symbol        | <a href="#">SPN</a>  |
| UniProt ID         | <a href="#">LEUK_HUMAN</a>   |
| Immunogen Region   | 276-400  |
| Immunogen Sequence | LWRRRQKRRTGALVLSRGGK RNVVDAWAGPAQVPEEGAV TVTVGGSGGDKGSGFPDGGEG<br>SSRRPTLTTFFGRKRSRQGS LAMEELKSGSGPSLKGEEEP LVASEDGAVDAPAPDEPEGG DGAAP |
| Specificity        | Recombinant fusion protein containing a sequence corresponding to amino acids 276-400 of human SPN (NP_003114.1).                      |

### ADDITIONAL INFORMATION

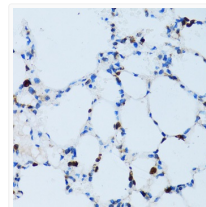
Note **STRICTLY FOR FURTHER SCIENTIFIC RESEARCH USE ONLY (RUO). MUST NOT TO BE USED IN DIAGNOSTIC OR THERAPEUTIC APPLICATIONS.**



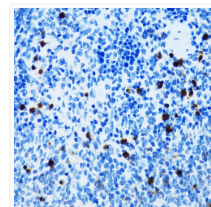
Western blot analysis of various lysates, using SPN rabbit polyclonal antibody (STJ28495) at 1:1000 dilution. Secondary antibody: HRP Goat Anti-rabbit IgG (H+L) (STJS000856) at 1:10000 dilution. Lysates/proteins: 25µg per lane. Blocking buffer: 3% non-fat dry milk in TBST. Detection: ECL Basic Kit. Negative control (NC) :U-138 MG, SH-SY5Y. Exposure time: 30s.



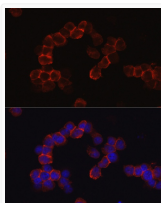
Immunohistochemistry analysis of paraffin-embedded human tonsil using SPN antibody (STJ28495) at dilution of 1:100 (40x lens). Perform microwave antigen retrieval with 10 mM PBS buffer pH 7. 2 before commencing with immunohistochemistry staining protocol.



Immunohistochemistry analysis of paraffin-embedded mouse lung using SPN antibody (STJ28495) at dilution of 1:100 (40x lens). Perform microwave antigen retrieval with 10 mM PBS buffer pH 7. 2 before commencing with immunohistochemistry staining protocol.



Immunohistochemistry analysis of paraffin-embedded mouse spleen using SPN antibody (STJ28495) at dilution of 1:100 (40x lens). Perform microwave antigen retrieval with 10 mM PBS buffer pH 7. 2 before commencing with immunohistochemistry staining protocol.



Immunofluorescence analysis of Jurkat cells using SPN rabbit polyclonal antibody (STJ28495) at dilution of 1:50 (40x lens). Blue: DAPI for nuclear staining.