

Anti-SPINT1 antibody (234-513) (STJ28494)

GENERAL INFORMATION

Product Type	Primary antibodies
Applications	WB/IF/ICC/ELISA
Host / Source	Rabbit
Reactivity	Human/Mouse/Rat

PRODUCT PROPERTIES

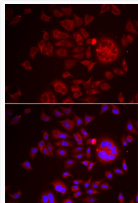
Clonality	Polyclonal
Concentration	Lot specific
Conjugation	Unconjugated
Purification	Affinity purification
Dilution Range	WB:1:500-1:2000 IF/CC:1:50-1:100 ELISA:Recommended starting concentration is 1 Mu g/mL. Please optimize the concentration based on your specific assay requirements.
Formulation	PBS with 0.02% Sodium Azide, 50% Glycerol, pH 7.3.
Isotype	IgG
Molecular Weight	Protein Mw: 58kDa Observed Mw: 70kDa
Storage Instruction	Store at -20°C for up to 1 year from the date of receipt, and avoid repeat freeze-thaw cycles.

TARGET INFORMATION

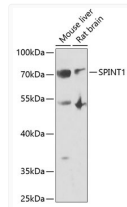
Gene ID	6692
Gene Symbol	SPINT1
UniProt ID	SPIT1_HUMAN
Immunogen Region	234-513
Immunogen Sequence	ANVTVTVLSTKQTEDYCLAS NKVGRCRGSFPRWYYDPTEQ ICKSFVYGGCLGNKNNYLRE EECLACRGVQGPSMERHVP VCSGTCQPTQFRCSNGCCID SFLECDTTPNCPDASDEAAC EKYTSGFDELQRIHFPSDKG HCVDLPDTGLCKESIPRWYY NPFSEHCARFTYGGCYGNKN NFEEEQCLESCRGISKKDV FGLRREIPISTGSVEMAVA VFLVICIVVVVAAILGYCFF
Specificity	Recombinant fusion protein containing a sequence corresponding to amino acids 234-513 of human SPINT1 (NP_003701.1).

ADDITIONAL INFORMATION

Note STRICTLY FOR FURTHER SCIENTIFIC RESEARCH USE ONLY (RUO). MUST NOT TO BE USED IN DIAGNOSTIC OR THERAPEUTIC APPLICATIONS.



Immunofluorescence analysis of HeLa cells using SPINT1 antibody (STJ28494). Blue: DAPI for nuclear staining.



Western blot analysis of extracts of various cell lines, using SPINT1 antibody (STJ28494) at 1:1000 dilution. _Secondary antibody: HRP Goat Anti-Rabbit IgG (H+L) (STJS000856) at 1:10000 dilution. _Lysates/proteins: 25 Mu g per lane. _Blocking buffer: 3% nonfat dry milk in TBST. _Detection: ECL Enhanced Kit. _Exposure time: 90s.