

## Anti-SNRPA antibody (1-282) (STJ28493)

### GENERAL INFORMATION

Product Type	Primary antibodies
Applications	WB/IHC-P/IF/ICC/ELISA
Host / Source	Rabbit
Reactivity	Human/Mouse/Rat

### PRODUCT PROPERTIES

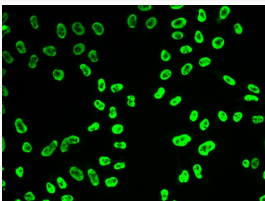
Clonality	Polyclonal
Concentration	Lot specific
Conjugation	Unconjugated
Purification	Affinity purification
Dilution Range	WB:1:500-1:2000 IHC-P:1:50-1:200 IF/ICC:1:50-1:200 ELISA:Recommended starting concentration is 1 Mu g/mL. Please optimize the concentration based on your specific assay requirements.
Formulation	PBS with 0.02% Sodium Azide, 50% Glycerol, pH 7.3.
Isotype	IgG
Molecular Weight	Protein Mw: 31kDa Observed Mw: 31kDa
Storage Instruction	Store at -20°C for up to 1 year from the date of receipt, and avoid repeat freeze-thaw cycles.

### TARGET INFORMATION

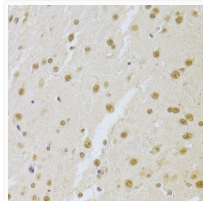
Gene ID	<a href="#">6626</a>
Gene Symbol	<a href="#">SNRPA</a>
UniProt ID	<a href="#">SNRPA_HUMAN</a>
Immunogen Region	1-282
Immunogen Sequence	MAVPETRPNHTIYINNLNK IKKDELKKSLEYAIFSQFGQI LDILVSRSLKMRGQAFVIFK EVSATNALRSMQGFPPFYDK PMRIQYAKTDSIIAKMKGT FVERDRKREKRKPKSQETPA TKKAVQGGGATPVVGAVQGP VPGMPPMTQAPRIMHHMPGQ PPYMPPPGMIPPPGLAPGQI PPGAMPPQQLMPGQMPPAQP LSENPNNHILFLTNLPEETN ELMLSMLFNQFFGFKEVRL
Specificity	Recombinant fusion protein containing a sequence corresponding to amino acids 1-282 of human U1A/U1A/SNRPA (NP_004587.1).

### ADDITIONAL INFORMATION

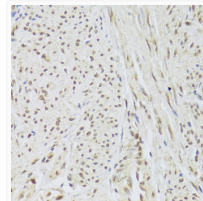
Note STRICTLY FOR FURTHER SCIENTIFIC RESEARCH USE ONLY (RUO). MUST NOT TO BE USED IN DIAGNOSTIC OR THERAPEUTIC APPLICATIONS.



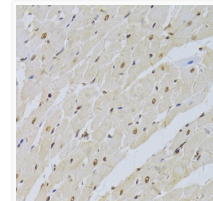
Immunofluorescence analysis of HeLa cells using U1A/U1A/SNRPA antibody (STJ28493).



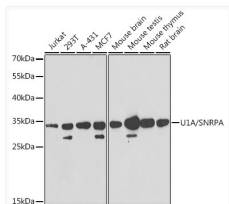
Immunohistochemistry analysis of paraffin-embedded mouse brain using U1A/U1A/SNRPA Antibody (STJ28493) at dilution of 1:100 (40x lens). Perform microwave antigen retrieval with 10 mM PBS buffer pH 7.2 before commencing with immunohistochemistry staining protocol.



Immunohistochemistry analysis of paraffin-embedded human adenomyosis using U1A/U1A/SNRPA Antibody (STJ28493) at dilution of 1:100 (40x lens). Perform microwave antigen retrieval with 10 mM PBS buffer pH 7.2 before commencing with immunohistochemistry staining protocol.



Immunohistochemistry analysis of paraffin-embedded rat heart using U1A/U1A/SNRPA Antibody (STJ28493) at dilution of 1:100 (40x lens). Perform microwave antigen retrieval with 10 mM PBS buffer pH 7.2 before commencing with immunohistochemistry staining protocol.



Western blot analysis of extracts of various cell lines, using U1A/U1A/SNRPA antibody (STJ28493) at 1:1000 dilution. Secondary antibody: HRP Goat Anti-Rabbit IgG (H+L) (STJS000856) at 1:10000 dilution. Lysates/proteins: 25 Mu g per lane. Blocking buffer: 3% nonfat dry milk in TBST. Detection: ECL Basic Kit. Exposure time: 90s.