

Anti-SFRP4 antibody (19-346) (STJ28492)

GENERAL INFORMATION

Product Type	Primary antibodies
Applications	WB/IF/ICC/ELISA
Host / Source	Rabbit
Reactivity	Human/Mouse/Rat

PRODUCT PROPERTIES

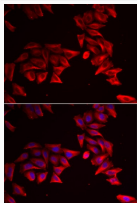
Clonality	Polyclonal
Concentration	Lot specific
Conjugation	Unconjugated
Purification	Affinity purification
Dilution Range	WB:1:500-1:2000 IF/CC:1:50-1:100 ELISA:Recommended starting concentration is 1 Mu g/mL. Please optimize the concentration based on your specific assay requirements.
Formulation	PBS with 0.02% Sodium Azide, 50% Glycerol, pH 7.3.
Isotype	IgG
Molecular Weight	Protein Mw: 40kDa Observed Mw: 40kDa/55kDa
Storage Instruction	Store at -20°C for up to 1 year from the date of receipt, and avoid repeat freeze-thaw cycles.

TARGET INFORMATION

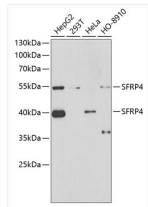
Gene ID	6424
Gene Symbol	SFRP4
UniProt ID	SFRP4_HUMAN
Immunogen Region	19-346
Immunogen Sequence	VRGAPCEAVRIPMCRHMPWN ITRMPNHLHHSTQENAILAI EQYEELVDVNCSAVLRFFLC AMYAPICTLEFLHDPKPKK SVCQRARDDCEPLMKMYNHS WPESLACDELPHYDRGVCIS PEAIVTDLPEDVKWIDITPD MMVQERPLDVDCRKLSPDRK KCKKVKPTLATYLSKNYSYV IHAKIKAVQRSQGCNEVTTVV DVKEIFKSSSPIPRTQVPLI TNSSCQCPHILPHQDVLIM
Specificity	Recombinant fusion protein containing a sequence corresponding to amino acids 19-346 of human SFRP4 (NP_003005.2).

ADDITIONAL INFORMATION

Note STRICTLY FOR FURTHER SCIENTIFIC RESEARCH USE ONLY (RUO). MUST NOT TO BE USED IN DIAGNOSTIC OR THERAPEUTIC APPLICATIONS.



Immunofluorescence analysis of HeLa cells using SFRP4 antibody (STJ28492). Blue: DAPI for nuclear staining.



Western blot analysis of extracts of various cell lines, using SFRP4 antibody (STJ28492) at 1:1000 dilution. Secondary antibody: HRP Goat Anti-Rabbit IgG (H+L) (STJS000856) at 1:10000 dilution. Lysates/proteins: 25 Mu g per lane. Blocking buffer: 3% nonfat dry milk in TBST. Detection: ECL Basic Kit. Exposure time: 60s.