

Anti-RPL9 antibody (1-192) (STJ28489)

GENERAL INFORMATION

Product Type	Primary antibodies
Applications	WB/IF/ICC/ELISA
Host / Source	Rabbit
Reactivity	Human/Mouse

PRODUCT PROPERTIES

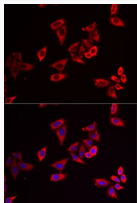
Clonality	Polyclonal
Concentration	Lot specific
Conjugation	Unconjugated
Purification	Affinity purification
Dilution Range	WB:1:500-1:2000 IF/CC:1:10-1:100 ELISA:Recommended starting concentration is 1 Mu g/mL. Please optimize the concentration based on your specific assay requirements.
Formulation	PBS with 0.02% Sodium Azide, 50% Glycerol, pH 7.3.
Isotype	IgG
Molecular Weight	Protein Mw: 22kDa Observed Mw: 22kDa
Storage Instruction	Store at -20°C for up to 1 year from the date of receipt, and avoid repeat freeze-thaw cycles.

TARGET INFORMATION

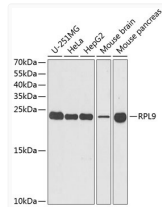
Gene ID	6133
Gene Symbol	RPL9 , RPL9P7 , RPL9P8 , RPL9P9
UniProt ID	RL9_HUMAN
Immunogen Region	1-192
Immunogen Sequence	MKTILSNQTVDIPENV DITL KGRTVIVKGP RGT LRRDFNH INVLSLLGKKKKRLRVDKW WGNRRELATVRTICSHVQNM IKGVTLGFRYKMR SVYAHFP INVVIQENGSLVEIRNFLGE KYIRRV RMRPGVACSVSQAQ KDELILEGNDIELVSN SAAAL IQQATTVKNKDIRKFLDGIY VSEKGT VQQADE
Specificity	Recombinant fusion protein containing a sequence corresponding to amino acids 1-192 of human RPL9 (NP_000652.2).

ADDITIONAL INFORMATION

Note **STRICTLY FOR FURTHER SCIENTIFIC RESEARCH USE ONLY (RUO). MUST NOT TO BE USED IN DIAGNOSTIC OR THERAPEUTIC APPLICATIONS.**



Immunofluorescence analysis of MCF7 cells using RPL9 antibody (STJ28489). Blue: DAPI for nuclear staining.



Western blot analysis of extracts of various cell lines, using RPL9 antibody (STJ28489) at 1:1000 dilution. Secondary antibody: HRP Goat Anti-Rabbit IgG (H+L) (STJS000856) at 1:10000 dilution. Lysates/proteins: 25 Mu g per lane. Blocking buffer: 3% nonfat dry milk in TBST. Detection: ECL Basic Kit. Exposure time: 90s.