

Anti-KLK10 antibody (43-276) (STJ28481)

GENERAL INFORMATION

Product Type	Primary antibodies
Applications	WB/IF/ICC/ELISA
Host / Source	Rabbit
Reactivity	Human/Mouse/Rat

PRODUCT PROPERTIES

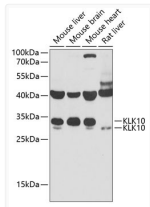
Clonality	Polyclonal
Concentration	Lot specific
Conjugation	Unconjugated
Purification	Affinity purification
Dilution Range	WB:1:500-1:2000 IF/CC:1:100-1:500 ELISA:Recommended starting concentration is 1 Mu g/mL. Please optimize the concentration based on your specific assay requirements.
Formulation	PBS with 0.02% Sodium Azide, 50% Glycerol, pH 7.3.
Isotype	IgG
Molecular Weight	Protein Mw: 30kDa Observed Mw: 30kDa
Storage Instruction	Store at -20°C for up to 1 year from the date of receipt, and avoid repeat freeze-thaw cycles.

TARGET INFORMATION

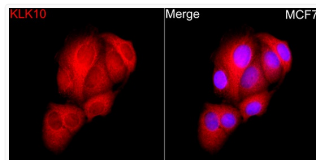
Gene ID	5655
Gene Symbol	KLK10
UniProt ID	KLK10_HUMAN
Immunogen Region	43-276
Immunogen Sequence	LDPEAYGSPCARGSQPWQVS LFNGLSFHCAGVLVDQSWVL TAAHCGNKPLWARVGDDHLL LLQGEQLRRTTRSVVHPKYH QGSGPILPRRTDEHDLMLLK LARPVVLGPRVRLALQLPYRC AQP GDQCQVAGWGTTAARRV KYNKGLTCSSITILSPKECE VFYPGVVTNNMICAGLDRGQ DPCQSDSGGPLVCDLQGI LSWG VYPCGSAQHPAVYTQI CKYMSWINKVIRSN
Specificity	Recombinant fusion protein containing a sequence corresponding to amino acids 43-276 of human KLK10 (NP_665895.1).

ADDITIONAL INFORMATION

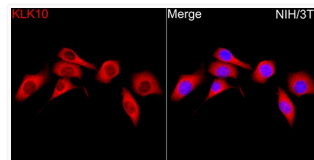
Note STRICTLY FOR FURTHER SCIENTIFIC RESEARCH USE ONLY (RUO). MUST NOT TO BE USED IN DIAGNOSTIC OR THERAPEUTIC APPLICATIONS.



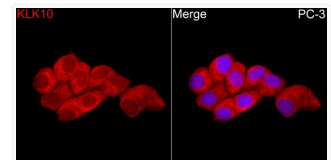
Western blot analysis of extracts of various cell lines, using KLK10 antibody (STJ28481) at 1:1000 dilution. Secondary antibody: HRP Goat Anti-rabbit IgG (H+L) (STJS000856) at 1:10000 dilution. Lysates/proteins: 25 Mu g per lane. Blocking buffer: 3% non-fat dry milk in TBST. Detection: ECL Basic Kit. Exposure time: 90s.



Immunofluorescence analysis of MCF7 cells using KLK10 rabbit polyclonal antibody (STJ28481) at dilution of 1:400 (40x lens). Secondary antibody: Cy3 Goat Anti-rabbit IgG (H+L) at 1:500 dilution. Blue: DAPI for nuclear staining.



Immunofluorescence analysis of NIH/3T3 cells using KLK10 rabbit polyclonal antibody (STJ28481) at dilution of 1:400 (40x lens). Secondary antibody: Cy3 Goat Anti-rabbit IgG (H+L) at 1:500 dilution. Blue: DAPI for nuclear staining.



Immunofluorescence analysis of PC-3 cells using KLK10 rabbit polyclonal antibody (STJ28481) at dilution of 1:400 (40x lens). Secondary antibody: Cy3 Goat Anti-rabbit IgG (H+L) at 1:500 dilution. Blue: DAPI for nuclear staining.