

Anti-OGDH antibody (148-427) (STJ28474)

GENERAL INFORMATION

Product Type	Primary antibodies
Applications	WB/IHC-P/IF/ICC/ELISA
Host / Source	Rabbit
Reactivity	Human/Mouse/Rat

PRODUCT PROPERTIES

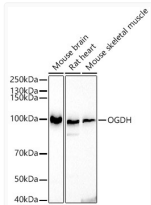
Clonality	Polyclonal
Concentration	Lot specific
Conjugation	Unconjugated
Purification	Affinity purification
Dilution Range	WB:1:500-1:1000 IHC-P:1:50-1:200 IF/ICC:1:10-1:100 ELISA:Recommended starting concentration is 1 Mu g/mL. Please optimize the concentration based on your specific assay requirements.
Formulation	PBS with 0.05% Proclin300, 50% Glycerol, pH 7.3.
Isotype	IgG
Molecular Weight	Protein Mw: 116kDa Observed Mw: 110kDa
Storage Instruction	Store at -20°C for up to 1 year from the date of receipt, and avoid repeat freeze-thaw cycles.

TARGET INFORMATION

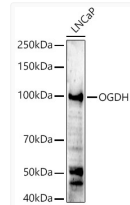
Gene ID	4967
Gene Symbol	OGDH
UniProt ID	ODO1_HUMAN
Immunogen Region	148-427
Immunogen Sequence	DPLGILDADLDSSVPADIIS STDKLGFGYGLDESDLDKVFH LPTTTFFIGGQESALPLREII RRLEMAYCQHIGVEFMFIND LEQCQWIRQKFETPGIMQFT NEEKRTLARLVRSTRFEFF LQRKWSSEKRFGLGEGEVLV PALKTIIDKSSENGVDYVIM GMPHRGRNLNLANVIRKELE QIFCQFDSKLEAADEGSGDV KYHLGMYHRRINRVTDNRNIT LSLVANPSHLEAADPVVMG
Specificity	Recombinant fusion protein containing a sequence corresponding to amino acids 148-427 of human OGDH (NP_001003941.1).

ADDITIONAL INFORMATION

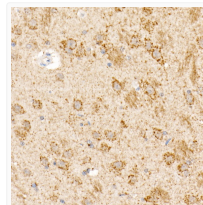
Note STRICTLY FOR FURTHER SCIENTIFIC RESEARCH USE ONLY (RUO). MUST NOT TO BE USED IN DIAGNOSTIC OR THERAPEUTIC APPLICATIONS.



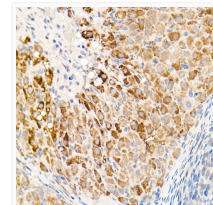
Western blot analysis of extracts of various cell lines, using OGDH antibody (STJ28474) at 1:500 dilution. Secondary antibody: HRP Goat Anti-rabbit IgG (H+L) (STJS000856) at 1:10000 dilution. Lysates/proteins: 25 Mu g per lane. Blocking buffer: 3% non-fat dry milk in TBST. Detection: ECL Basic Kit. Exposure time: 3s.



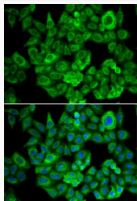
Western blot analysis of extracts of LNCaP cells, using OGDH antibody (STJ28474) at 1:500 dilution. Secondary antibody: HRP Goat Anti-rabbit IgG (H+L) (STJS000856) at 1:10000 dilution. Lysates/proteins: 25 Mu g per lane. Blocking buffer: 3% non-fat dry milk in TBST. Detection: ECL Enhanced Kit. Exposure time: 90s.



Immunohistochemistry analysis of paraffin-embedded rat brain using OGDH rabbit polyclonal antibody (STJ28474) at dilution of 1:20 (40x lens). Perform high pressure antigen retrieval with 10 mM citrate buffer pH 6. 0 before commencing with immunohistochemistry staining protocol.



Immunohistochemistry analysis of paraffin-embedded rat ovary using OGDH rabbit polyclonal antibody (STJ28474) at dilution of 1:20 (40x lens). Perform high pressure antigen retrieval with 10 mM citrate buffer pH 6. 0 before commencing with immunohistochemistry staining protocol.



Immunofluorescence analysis of U2OS cells using OGDH antibody (STJ28474). Blue: DAPI for nuclear staining.