

Anti-GRP antibody (1-148) (STJ28463)

GENERAL INFORMATION

Product Type	Primary antibodies
Applications	WB/IHC-P/IF/ICC/ELISA
Host / Source	Rabbit
Reactivity	Human/Mouse/Rat

PRODUCT PROPERTIES

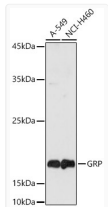
Clonality	Polyclonal
Concentration	Lot specific
Conjugation	Unconjugated
Purification	Affinity purification
Dilution Range	WB:1:500-1:1000 IHC-P:1:50-1:200 IF/ICC:1:50-1:200 ELISA:Recommended starting concentration is 1 Mu g/mL. Please optimize the concentration based on your specific assay requirements.
Formulation	PBS with 0.02% Sodium Azide, 50% Glycerol, pH 7.3.
Isotype	IgG
Molecular Weight	Protein Mw: 16kDa Observed Mw: 16Kda
Storage Instruction	Store at -20°C for up to 1 year from the date of receipt, and avoid repeat freeze-thaw cycles.

TARGET INFORMATION

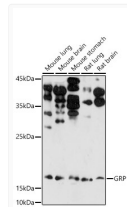
Gene ID	2922
Gene Symbol	GRP
UniProt ID	GRP_HUMAN
Immunogen Region	1-148
Immunogen Sequence	MRGRELPLVLLALVLCLAPR GRAVPLPAGGGTVLTKMYPR GNHWAVGHLMGKKSTGESS VSEKSLKQQLREYIRWEEA ARNLLGLIEAKENRNHQPPQ PKALGNQQPSWDESDSSNFK DVGSKGKVGRLSAPGSQREG RNPQLNQQ
Specificity	Recombinant fusion protein containing a sequence corresponding to amino acids 1-148 of human Gastrin Releasing Peptide (GRP) (NP_002082.2).

ADDITIONAL INFORMATION

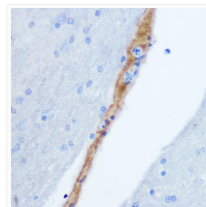
Note STRICTLY FOR FURTHER SCIENTIFIC RESEARCH USE ONLY (RUO). MUST NOT TO BE USED IN DIAGNOSTIC OR THERAPEUTIC APPLICATIONS.



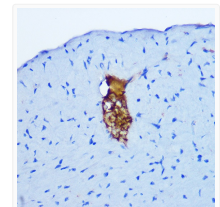
Western blot analysis of extracts of various cell lines, using Gastrin Releasing Peptide (GRP) antibody (STJ28463) at 1:1000 dilution. Secondary antibody: HRP Goat Anti-rabbit IgG (H+L) (STJS000856) at 1:10000 dilution. Lysates/proteins: 25 Mu g per lane. Blocking buffer: 3% non-fat dry milk in TBST. Detection: ECL Basic Kit. Exposure time: 180s.



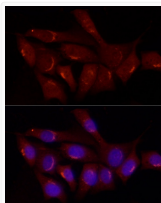
Western blot analysis of extracts of various cell lines, using Gastrin Releasing Peptide (GRP) antibody (STJ28463) at 1:1000 dilution. Secondary antibody: HRP Goat Anti-rabbit IgG (H+L) (STJS000856) at 1:10000 dilution. Lysates/proteins: 25 Mu g per lane. Blocking buffer: 3% non-fat dry milk in TBST. Detection: ECL Enhanced Kit. Exposure time: 180s.



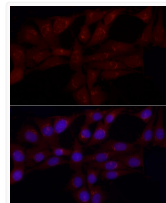
Immunohistochemistry analysis of paraffin-embedded rat brain using Gastrin Releasing Peptide (GRP) rabbit polyclonal antibody (STJ28463) at dilution of 1:100 (40x lens). Perform microwave antigen retrieval with 10 mM Tris/EDTA buffer pH 9.0 before commencing with immunohistochemistry staining protocol.



Immunohistochemistry analysis of paraffin-embedded mouse heart using Gastrin Releasing Peptide (GRP) rabbit polyclonal antibody (STJ28463) at dilution of 1:100 (40x lens). Perform microwave antigen retrieval with 10 mM Tris/EDTA buffer pH 9.0 before commencing with immunohistochemistry staining protocol.



Immunofluorescence analysis of NIH/3T3 cells using Gastrin Releasing Peptide (GRP) rabbit polyclonal antibody (STJ28463) at dilution of 1:50 (40x lens). Blue: DAPI for nuclear staining.



Immunofluorescence analysis of PC-12 cells using Gastrin Releasing Peptide (GRP) rabbit polyclonal antibody (STJ28463) at dilution of 1:50 (40x lens). Blue: DAPI for nuclear staining.