

Anti-ELF3 antibody (1-280) (STJ28454)

GENERAL INFORMATION

Product Type	Primary antibodies
Applications	WB/IHC-P/ELISA
Host / Source	Rabbit
Reactivity	Human/Mouse/Rat

PRODUCT PROPERTIES

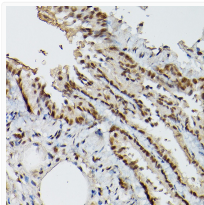
Clonality	Polyclonal
Concentration	Lot specific
Conjugation	Unconjugated
Purification	Affinity purification
Dilution Range	WB:1:500-1:2000 IHC-P:1:50-1:200 ELISA:Recommended starting concentration is 1 μ g/mL. Please optimize the concentration based on your specific assay requirements.
Formulation	PBS with 0.05% Proclin300, 50% Glycerol, pH7.3.
Isotype	IgG
Molecular Weight	Protein Mw: 41kDa Observed Mw: 42kDa
Storage Instruction	Store at -20°C for up to 1 year from the date of receipt, and avoid repeat freeze-thaw cycles.

TARGET INFORMATION

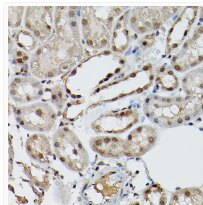
Gene ID	1999
Gene Symbol	ELF3
UniProt ID	ELF3_HUMAN
Immunogen Region	1-280
Immunogen Sequence	MAATCEISNIFSNYFSAMYS SEDSTLASVPPAATFGADDL VLTLNPNQMSLEGTEKASWL GEQPQFWSKTQVLDWISYQV EKNKYDASAIIDFSRCDMDGA TLCNCALEELRLVFGPLGDQ LHAQLRDLTSSSSDELWII ELLEKDGMAFQEALDPGPFQ QGSPFAQELLDDGGQASPYH PGSCGAGAPSPGSSDVSTAG TGASRSSHSSDGGSDVDLD PTDGKLFPSDGFDRDCKKGD
Specificity	Recombinant fusion protein containing a sequence corresponding to amino acids 1-280 of human ESE1/ESE1/ELF3 (NP_004424.3).

ADDITIONAL INFORMATION

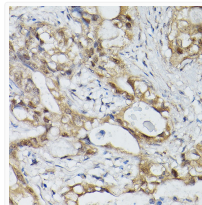
Note **STRICTLY FOR FURTHER SCIENTIFIC RESEARCH USE ONLY (RUO). MUST NOT TO BE USED IN DIAGNOSTIC OR THERAPEUTIC APPLICATIONS.**



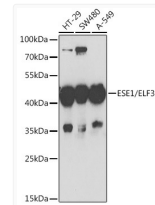
Immunohistochemistry analysis of paraffin-embedded rat lung using ESE1/ELF3 Rabbit polyclonal antibody (STJ28454) at dilution of 1:100 (40x lens). Perform high pressure antigen retrieval with 10 mM citrate buffer pH 6.0 before commencing with immunohistochemistry staining protocol.



Immunohistochemistry analysis of paraffin-embedded mouse kidney using ESE1/ELF3 Rabbit polyclonal antibody (STJ28454) at dilution of 1:100 (40x lens). Perform high pressure antigen retrieval with 10 mM citrate buffer pH 6.0 before commencing with immunohistochemistry staining protocol.



Immunohistochemistry analysis of paraffin-embedded human lung cancer using ESE1/ELF3 Rabbit polyclonal antibody (STJ28454) at dilution of 1:100 (40x lens). Perform high pressure antigen retrieval with 10 mM citrate buffer pH 6.0 before commencing with immunohistochemistry staining protocol.



Western blot analysis of extracts of various cell lines, using ESE1/ESE1/ELF3 antibody (STJ28454) at 1:1000 dilution. Secondary antibody: HRP Goat Anti-Rabbit IgG (H+L) (STJS000856) at 1:10000 dilution. Lysates/proteins: 25 μ g per lane. Blocking buffer: 3% nonfat dry milk in TBST. Detection: ECL Basic Kit. Exposure time: 90s.