

## Anti-C4BPB antibody (17-251) (STJ28445)

### GENERAL INFORMATION

Product Type	Primary antibodies
Applications	WB/IF/ICC/ELISA
Host / Source	Rabbit
Reactivity	Human/Mouse/Rat

### PRODUCT PROPERTIES

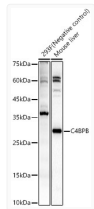
Clonality	Polyclonal
Concentration	Lot specific
Conjugation	Unconjugated
Purification	Affinity purification
Dilution Range	WB:1:500-1:1000 IF/CC:1:50-1:200 ELISA:Recommended starting concentration is 1 $\mu$ g/mL. Please optimize the concentration based on your specific assay requirements.
Formulation	PBS with 0.02% Sodium Azide, 50% Glycerol, pH 7.3.
Isotype	IgG
Molecular Weight	Protein Mw: 28kDa Observed Mw: 28kDa
Storage Instruction	Store at -20°C for up to 1 year from the date of receipt, and avoid repeat freeze-thaw cycles.

### TARGET INFORMATION

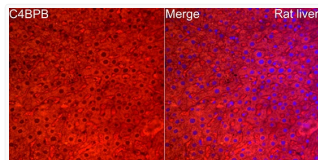
Gene ID	<a href="#">725</a>
Gene Symbol	<a href="#">C4BPB</a>
UniProt ID	<a href="#">C4BPB_HUMAN</a>
Immunogen Region	17-251
Immunogen Sequence	ASDEHCPELPPVDNSIFVAK EVEGQILGTYVCIKGYHLVG KKTLCFCNASKEWDNTTTECR LGHCPDPVLVNGEFSSSGPV NVSDKITFCNDHYILKGSN RSCCLEDDHTWAPPFPICKSR DCDPPGNPVHGYFEGNNFTL GSTISYCEDRYLVGVQEQ QCVDGEWSSALPVCKLIQEA PKPECEKALLAFQESKNLCE AMENFMQQLKESGMTMEELK YSLELKKAEKAKLL
Specificity	Recombinant fusion protein containing a sequence corresponding to amino acids 17-251 of human C4BPB (NP_001017364.1).

### ADDITIONAL INFORMATION

Note **STRICTLY FOR FURTHER SCIENTIFIC RESEARCH USE ONLY (RUO). MUST NOT TO BE USED IN DIAGNOSTIC OR THERAPEUTIC APPLICATIONS.**



Western blot analysis of various lysates, using C4BPB rabbit polyclonal antibody (STJ28445) at 1:900 dilution. Secondary antibody: HRP Goat Anti-rabbit IgG (H+L) (STJS000856) at 1:10000 dilution. Lysates/proteins: 25  $\mu$ g per lane. Blocking buffer: 3% non-fat dry milk in TBST. Detection: ECL Basic Kit. Exposure time: 10s.



Perform high pressure antigen retrieval with 10 mM citrate buffer pH 6.0 before commencing with IF staining protocol. Immunofluorescence analysis of rat liver cells using C4BPB rabbit polyclonal antibody (STJ28445) at dilution of 1:100 (40x lens). Blue: DAPI for nuclear staining.