

Anti-BTG1 antibody (22-171) (STJ28442)

GENERAL INFORMATION

Product Type	Primary antibodies
Applications	WB/IF/ICC/ELISA
Host / Source	Rabbit
Reactivity	Human

PRODUCT PROPERTIES

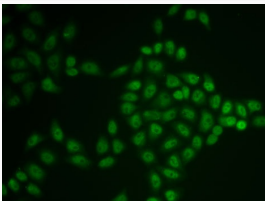
Clonality	Polyclonal
Concentration	Lot specific
Conjugation	Unconjugated
Purification	Affinity purification
Dilution Range	WB:1:500-1:2000 IF/CC:1:50-1:100 ELISA:Recommended starting concentration is 1 µg/mL. Please optimize the concentration based on your specific assay requirements.
Formulation	PBS with 0.02% Sodium Azide, 50% Glycerol, pH 7.3.
Isotype	IgG
Molecular Weight	Protein Mw: 19kDa Observed Mw: Refer to Figures
Storage Instruction	Store at -20°C for up to 1 year from the date of receipt, and avoid repeat freeze-thaw cycles.

TARGET INFORMATION

Gene ID	694
Gene Symbol	BTG1
UniProt ID	BTG1_HUMAN
Immunogen Region	22-171
Immunogen Sequence	ISKFLRTKGLTSEKQLQTFSS QSLQELLAEHYKHHWFPEKP CKGSGYRCIRINHKMDPLIG QAAQRIGLSSQELFRLLPSE LTLWVDPYEVSYRIGEDGSI CVLYEASPAGGSTQNSTNVQ MVDSRISCKEELLGRTSPS KNYNMMTVSG
Specificity	Recombinant fusion protein containing a sequence corresponding to amino acids 22-171 of human BTG1 (NP_001722.1).

ADDITIONAL INFORMATION

Note	STRICTLY FOR FURTHER SCIENTIFIC RESEARCH USE ONLY (RUO). MUST NOT TO BE USED IN DIAGNOSTIC OR THERAPEUTIC APPLICATIONS.
------	---



Immunofluorescence analysis of U2OS cells using BTG1 antibody (STJ28442).