

Anti-FAP antibody (26-760) (STJ28432)

GENERAL INFORMATION

Product Type	Primary antibodies
Applications	WB/IF/ICC/ELISA
Host / Source	Rabbit
Reactivity	Human/Mouse/Rat

PRODUCT PROPERTIES

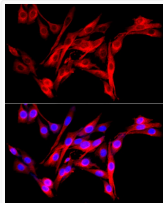
Clonality	Polyclonal
Concentration	Lot specific
Conjugation	Unconjugated
Purification	Affinity purification
Dilution Range	WB:1:500-1:1000 IF/CC:1:50-1:200 ELISA:Recommended starting concentration is 1 µg/mL. Please optimize the concentration based on your specific assay requirements.
Formulation	PBS with 0.05% Proclin300, 50% Glycerol, pH7.3.
Isotype	IgG
Molecular Weight	Protein Mw: 88kDa Observed Mw: 90kDa/95kDa
Storage Instruction	Store at -20°C for up to 1 year from the date of receipt, and avoid repeat freeze-thaw cycles.

TARGET INFORMATION

Gene ID	2191
Gene Symbol	FAP
UniProt ID	SEPR_HUMAN
Immunogen Region	26-760
Immunogen Sequence	LRPSRVHNSEENTMRALTLK DILNGTFSYKTFPPNWISGQ EYLHQADNNIVLYNIETGQ SYTILSNRTMKSVNASNYGL SPDRQFVYLESDYSKLRWYS YTATYYIYDLSNGEFVRGNE LPRPIQYLCWSPVGSKLAYV YQNNIYLKQRPGDPPFQITF NGRENKIFNGIPDWVYEEEM LATKYALWWSPNGKFLAYAE FNDTDIPVIAYSYYGDEQYP RTINIPYPKAGAKNPVVR
Specificity	Recombinant fusion protein containing a sequence corresponding to amino acids 26-760 of human Fibroblast activation protein-Alpha (FAP) (NP_004451.2).

ADDITIONAL INFORMATION

Note	STRICTLY FOR FURTHER SCIENTIFIC RESEARCH USE ONLY (RUO). MUST NOT TO BE USED IN DIAGNOSTIC OR THERAPEUTIC APPLICATIONS.
------	---



Immunofluorescence analysis of PC-12 cells using Fibroblast activation protein-Alpha (FAP) Rabbit polyclonal antibody (STJ28432) at dilution of 1:50 (40x lens). Blue: DAPI for nuclear staining.