

Anti-SYP antibody (222-313) (STJ28429)

GENERAL INFORMATION

Product Type	Primary antibodies
Applications	WB/IHC-P/IF/ICC/IP/ELISA
Host / Source	Rabbit
Reactivity	Human/Mouse/Rat

PRODUCT PROPERTIES

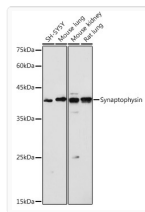
Clonality	Polyclonal
Concentration	Lot specific
Conjugation	Unconjugated
Purification	Affinity purification
Dilution Range	WB:1:500-1:1000 IHC-P:1:50-1:200 IF/CC:1:50-1:200 IP:0.5 Mu g-4 Mu g antibody for 400 Mu g-600 Mu g extracts of whole cells ELISA:Recommended starting concentration is 1 Mu g/mL. Please optimize the concentration based on your specif
Formulation	PBS with 0.09% Sodium Azide, 50% Glycerol, pH 7.3.
Isotype	IgG
Molecular Weight	Protein Mw: 34kDa Observed Mw: 38kDa
Storage Instruction	Store at-20°C for up to 1 year from the date of receipt, and avoid repeat freeze-thaw cycles.

TARGET INFORMATION

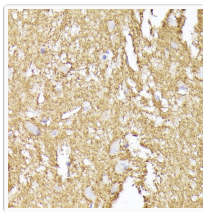
Gene ID	6855
Gene Symbol	SYP
UniProt ID	SYPH_HUMAN
Immunogen Region	222-313
Immunogen Sequence	VFKETGWAAPFLRAPPGAPE KQPAPGDAYGDAGYGGQGGG YGPQDSYGPQGGYQPDYGGQP AGSGGSGYGPQG DYGGQGGY G P Q G A P T S F S N Q M
Specificity	Recombinant fusion protein containing a sequence corresponding to amino acids 222-313 of human Synaptophysin (NP_003170.1).

ADDITIONAL INFORMATION

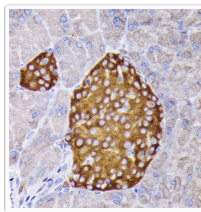
Note	STRICTLY FOR FURTHER SCIENTIFIC RESEARCH USE ONLY (RUO). MUST NOT TO BE USED IN DIAGNOSTIC OR THERAPEUTIC APPLICATIONS.
------	---



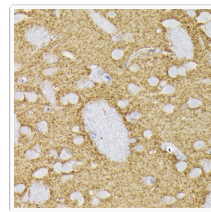
Western blot analysis of extracts of various cell lines, using Synaptophysin antibody (STJ28429) at 1:1000 dilution. Secondary antibody: HRP Goat Anti-rabbit IgG (H+L) (STJS000856) at 1:10000 dilution. Lysates/proteins: 25 μ g per lane. Blocking buffer: 3% non-fat dry milk in TBST. Detection: ECL Basic Kit. Exposure time: 1s.



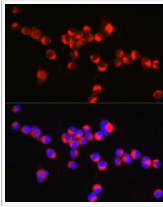
Immunohistochemistry analysis of paraffin-embedded human brain using Synaptophysin rabbit polyclonal antibody (STJ28429) at dilution of 1:200 (40x lens). Perform high pressure antigen retrieval with 10 mM citrate buffer pH 6.0 before commencing with immunohistochemistry staining protocol.



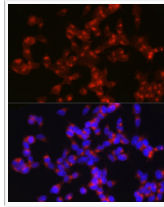
Immunohistochemistry analysis of paraffin-embedded mouse pancreatic islet using Synaptophysin rabbit polyclonal antibody (STJ28429) at dilution of 1:200 (40x lens). Perform high pressure antigen retrieval with 10 mM citrate buffer pH 6.0 before commencing with immunohistochemistry staining protocol.



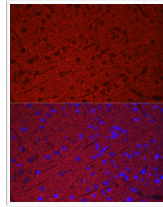
Immunohistochemistry analysis of paraffin-embedded rat brain using Synaptophysin rabbit polyclonal antibody (STJ28429) at dilution of 1:200 (40x lens). Perform high pressure antigen retrieval with 10 mM citrate buffer pH 6.0 before commencing with immunohistochemistry staining protocol.



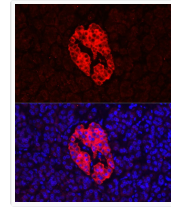
Immunofluorescence analysis of Neuro-2a cells using Synaptophysin rabbit polyclonal antibody (STJ28429) at dilution of 1:100 (40x lens). Blue: DAPI for nuclear staining.



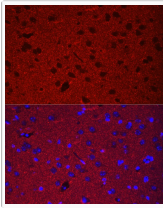
Immunofluorescence analysis of SH-SY5Y cells using Synaptophysin rabbit polyclonal antibody (STJ28429) at dilution of 1:100 (40x lens). Blue: DAPI for nuclear staining.



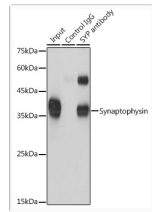
Immunofluorescence analysis of rat brain using Synaptophysin rabbit polyclonal antibody (STJ28429) at dilution of 1:100 (40x lens). Blue: DAPI for nuclear staining.



Immunofluorescence analysis of human pancreas using Synaptophysin rabbit polyclonal antibody (STJ28429) at dilution of 1:100 (40x lens). Blue: DAPI for nuclear staining.



Immunofluorescence analysis of mouse brain using Synaptophysin rabbit polyclonal antibody (STJ28429) at dilution of 1:100 (40x lens). Blue: DAPI for nuclear staining.



Immunoprecipitation analysis of 600 μ g extracts of mouse brain cells using 3 μ g Synaptophysin antibody (STJ28429). Western blot was performed from the immunoprecipitate using Synaptophysin antibody (STJ28429) at a dilution of 1:1000.