

## Anti-XRCC5 antibody (543-732) (STJ28425)

### GENERAL INFORMATION

Product Type	Primary antibodies
Applications	WB/IHC-P/IF/ICC/IP/ELISA
Host / Source	Rabbit
Reactivity	Human/Mouse/Rat

### PRODUCT PROPERTIES

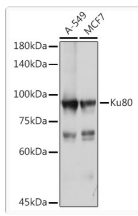
Clonality	Polyclonal
Concentration	Lot specific
Conjugation	Unconjugated
Purification	Affinity purification
Dilution Range	WB:1:500-1:1000 IHC-P:1:100-1:200 IF/CC:1:20-1:100 IP:0.5 µg-4 µg antibody for 200 µg-400 µg extracts of whole cells ELISA:Recommended starting concentration is 1 µg/mL. Please optimize the concentration based on your speci
Formulation	PBS with 0.02% Sodium Azide, 50% Glycerol, pH 7.3.
Isotype	IgG
Molecular Weight	Protein Mw: 83kDa Observed Mw: 86kDa
Storage Instruction	Store at-20°C for up to 1 year from the date of receipt, and avoid repeat freeze-thaw cycles.

### TARGET INFORMATION

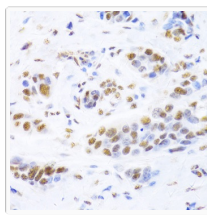
Gene ID	<a href="#">7520</a>
Gene Symbol	<a href="#">XRCC5</a>
UniProt ID	<a href="#">XRCC5_HUMAN</a>
Immunogen Region	543-732
Immunogen Sequence	KKKDQVTAQEIFQDNHEDGP TAKKLTKEQGGAHFVSLSLA EGSVTSVGSVNPAENFRVLV KQKKASFEEASNQLNHIEQ FLDTNETPYFMKSIDCIRAF REEAIKFSEEQRFNFLKAL QEKVEIKQLNHFWEIVVQDG ITLITKEEASGSSVTAAEEAK KFLAPKDKPSGDAAVFEEG GDVDDLLDMI
Specificity	Recombinant fusion protein containing a sequence corresponding to amino acids 543-732 of human Ku80 (NP_066964.1).

### ADDITIONAL INFORMATION

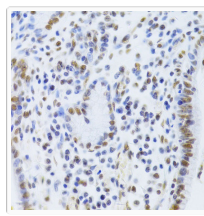
Note	STRICTLY FOR FURTHER SCIENTIFIC RESEARCH USE ONLY (RUO). MUST NOT TO BE USED IN DIAGNOSTIC OR THERAPEUTIC APPLICATIONS.
------	-------------------------------------------------------------------------------------------------------------------------



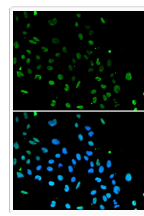
Western blot analysis of various lysates using Ku80 Rabbit pAb (STJ28425) at 1:1000 dilution. Secondary antibody: HRP-conjugated Goat anti-Rabbit IgG (H+L) (STJS000856) at 1:10000 dilution. Lysates/proteins: 25 Mu g per lane. Blocking buffer: 3% nonfat dry milk in TBST. Detection: ECL Basic Kit Exposure time: 15s.



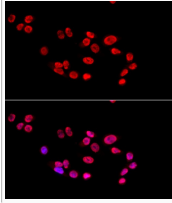
Western blot analysis of various lysates using Ku80 Rabbit pAb (STJ28425) at 1:1000 dilution. Secondary antibody: HRP-conjugated Goat anti-Rabbit IgG (H+L) (STJS000856) at 1:10000 dilution. Lysates/proteins: 25 Mu g per lane. Blocking buffer: 3% nonfat dry milk in TBST. Detection: ECL Basic Kit Exposure time: 10s.



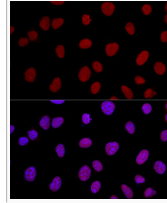
Immunohistochemistry analysis of paraffin-embedded Human prostate cancer using Ku80 Rabbit pAb (STJ28425) at dilution of 1:100 (40x lens). Microwave antigen retrieval performed with 0.01M PBS Buffer (pH 7.2) prior to immunohistochemistry staining.



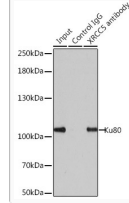
Immunofluorescence analysis of A549 cells using Ku80 Rabbit pAb (STJ28425). Secondary antibody: Cy3-conjugated Goat anti-Rabbit IgG (H+L) (STJS001166) at 1:500 dilution. Blue: DAPI for nuclear staining.



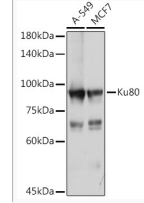
Confocal immunofluorescence analysis of U2OS cells using Ku80 Rabbit pAb (STJ28425) at dilution of 1:100. Blue: DAPI for nuclear staining.



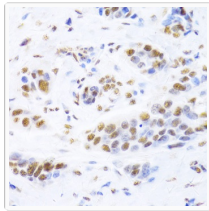
Immunofluorescence analysis of HeLa cells using Ku80 Rabbit pAb (STJ28425) at dilution of 1:100 (40x lens). Secondary antibody: Cy3-conjugated Goat anti-Rabbit IgG (H+L) (STJS001166) at 1:500 dilution. Blue: DAPI for nuclear staining.



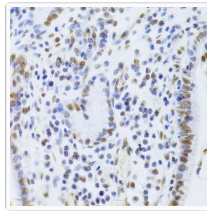
Immunoprecipitation analysis of 200 Mu g extracts of 293T cells using 1 Mu g Ku80 antibody (STJ28425). Western blot was performed from the immunoprecipitate using Ku80 antibody (STJ28425) at a dilution of 1:1000.



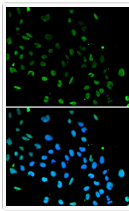
Western blot analysis of various lysates using Ku80 Rabbit pAb (STJ28425) at 1:1000 dilution. Secondary antibody: HRP-conjugated Goat anti-Rabbit IgG (H+L) (STJS000856) at 1:10000 dilution. Lysates/proteins: 25 Mu g per lane. Blocking buffer: 3% nonfat dry milk in TBST. Detection: ECL Basic Kit Exposure time: 10s.



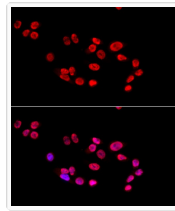
Immunohistochemistry analysis of paraffin-embedded Human stomach using Ku80 Rabbit pAb (STJ28425) at dilution of 1:100 (40x lens). Microwave antigen retrieval performed with 0.01M PBS Buffer (pH 7.2) prior to immunohistochemistry staining.



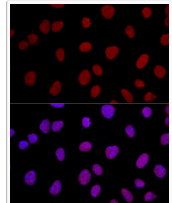
Immunohistochemistry analysis of paraffin-embedded Human breast cancer using Ku80 Rabbit pAb (STJ28425) at dilution of 1:100 (40x lens). Microwave antigen retrieval performed with 0.01M PBS Buffer (pH 7.2) prior to immunohistochemistry staining.



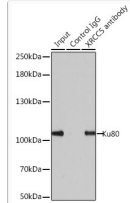
Immunofluorescence analysis of A549 cells using Ku80 Rabbit pAb (STJ28425). Secondary antibody: Cy3-conjugated Goat anti-Rabbit IgG (H+L) (STJS001166) at 1:500 dilution. Blue: DAPI for nuclear staining.



Immunofluorescence analysis of HeLa cells using Ku80 Rabbit pAb (STJ28425) at dilution of 1:100 (40x lens). Secondary antibody: Cy3-conjugated Goat anti-Rabbit IgG (H+L) (STJS001166) at 1:500 dilution. Blue: DAPI for nuclear staining.



Confocal immunofluorescence analysis of U2OS cells using Ku80 Rabbit pAb (STJ28425) at dilution of 1:100. Blue: DAPI for nuclear staining.



Immunoprecipitation analysis of 200 Mu g extracts of 293T cells using 1 Mu g Ku80 antibody (STJ28425). Western blot was performed from the immunoprecipitate using Ku80 antibody (STJ28425) at a dilution of 1:1000.