

Anti-SP100 antibody (181-480) (STJ28414)

GENERAL INFORMATION

Product Type	Primary antibodies
Applications	WB/ELISA
Host / Source	Rabbit
Reactivity	Human/Mouse

PRODUCT PROPERTIES

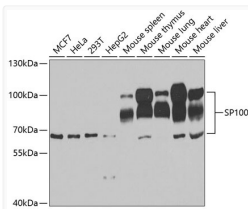
Clonality	Polyclonal
Concentration	Lot specific
Conjugation	Unconjugated
Purification	Affinity purification
Dilution Range	WB:1:500-1:2000 ELISA:Recommended starting concentration is 1 Mu g/mL. Please optimize the concentration based on your specific assay requirements.
Formulation	PBS with 0.02% Sodium Azide, 50% Glycerol, pH 7.3.
Isotype	IgG
Molecular Weight	Protein Mw: 100kDa Observed Mw: 66-100kDa
Storage Instruction	Store at -20°C for up to 1 year from the date of receipt, and avoid repeat freeze-thaw cycles.

TARGET INFORMATION

Gene ID	6672
Gene Symbol	SP100
UniProt ID	SP100_HUMAN
Immunogen Region	181-480
Immunogen Sequence	FRSLTWPPSGSPSHAGTTPP ENGLSEHPCETEIQINAKRKD TTSDKDDSLGSSQQTNEQCAQ KAEPTESCEQIAVQVNNNGDA GREMPCLPCDEESPEAELH NHGIQINSCSVRLVDIKKEK PFSNSKVEQQAQARTHNNQA SDIIVISSEDESGSTDVDEP LEVFISAPRSEPVINNDNPL ESNDEKEGQEATCSRQPQVP EPMDFRKLSTFRESFKKRV I GQDHDFFSESEEEEEAPAEAS
Specificity	Recombinant fusion protein containing a sequence corresponding to amino acids 181-480 of human SP100 (NP_001193631.1).

ADDITIONAL INFORMATION

Note STRICTLY FOR FURTHER SCIENTIFIC RESEARCH USE ONLY (RUO). MUST NOT TO BE USED IN DIAGNOSTIC OR THERAPEUTIC APPLICATIONS.



Western blot analysis of extracts of various cell lines, using SP100 antibody (STJ28414) at 1:1000 dilution. _Secondary antibody: HRP Goat Anti-Rabbit IgG (H+L) (STJS000856) at 1:10000 dilution. _Lysates/proteins: 25 Mu g per lane. _Blocking buffer: 3% nonfat dry milk in TBST. _Detection: ECL Enhanced Kit. _Exposure time: 30s.